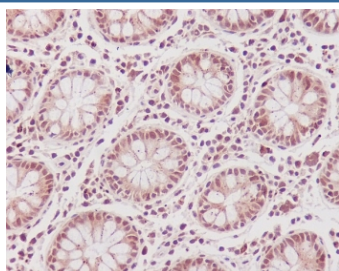


## CDK1 Antibody / CDC2 [clone BOH-3] (RQ5144)

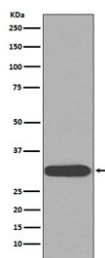
Catalog No.	Formulation	Size
RQ5144	Antibody in PBS with 0.02% sodium azide, 50% glycerol and 0.4-0.5mg/ml BSA	100 ul

[Bulk quote request](#)

Availability	1-2 weeks
Species Reactivity	Human
Format	Purified
Clonality	Rabbit Monoclonal
Isotype	Rabbit IgG
Clone Name	BOH-3
Purity	Affinity purified
UniProt	P06493
Applications	Western Blot : 1:500-1:2000 Immunohistochemistry (FFPE) : 1:50-1:200
Limitations	This CDK1 antibody is available for research use only.



IHC staining of FFPE human colon tissue with CDK1 antibody. HIER: boil tissue sections in pH6, 10mM citrate buffer, for 10-20 min and allow to cool before testing.



Western blot testing of human HeLa cell lysate with CDK1 antibody. Predicted molecular weight ~33 kDa.

## Description

The protein encoded by this gene is a member of the Ser/Thr protein kinase family. This protein is a catalytic subunit of the highly conserved protein kinase complex known as M-phase promoting factor (MPF), which is essential for G1/S and G2/M phase transitions of eukaryotic cell cycle. Mitotic cyclins stably associate with this protein and function as regulatory subunits. The kinase activity of this protein is controlled by cyclin accumulation and destruction through the cell cycle. The phosphorylation and dephosphorylation of this protein also play important regulatory roles in cell cycle control. [RefSeq]

## Application Notes

Optimal dilution of the CDK1 antibody should be determined by the researcher.

## Immunogen

A synthetic peptide specific to human CDK1 / CDC2 was used as the immunogen for the CDK1 antibody.

## Storage

Store the CDK1 antibody at -20oC.