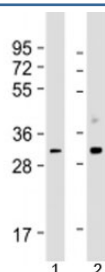


## CDK1 Antibody / CDC2 [clone 1644CT107.30.27] (F53812)

Catalog No.	Formulation	Size
F53812-0.2ML	In 1X PBS, pH 7.4, with 0.09% sodium azide	0.2 ml
F53812-0.05ML	In 1X PBS, pH 7.4, with 0.09% sodium azide	0.05 ml

[Bulk quote request](#)

<b>Availability</b>	1-3 business days
<b>Species Reactivity</b>	Human
<b>Format</b>	Purified
<b>Host</b>	Mouse
<b>Clonality</b>	Monoclonal (mouse origin)
<b>Isotype</b>	Mouse IgG1, kappa
<b>Clone Name</b>	1644CT107.30.27
<b>Purity</b>	Protein G affinity chromatography
<b>UniProt</b>	P06493
<b>Applications</b>	Western Blot : 1:500-1:1000
<b>Limitations</b>	This CDK1 antibody is available for research use only.



Western blot testing of human 1) Jurkat and 2) HeLa cell lysate with CDK1 antibody at 1:1000. Predicted molecular weight: 34 kDa.

## Description

Cyclin Dependent Kinase 1 plays a key role in the control of the eukaryotic cell cycle by modulating the centrosome cycle as well as mitotic onset; promotes G2-M transition, and regulates G1 progress and G1-S transition via association with multiple interphase cyclins. Required in higher cells for entry into S-phase and mitosis.

## Application Notes

Titration of the CDK1 antibody may be required due to differences in protocols and substrate sensitivity.

## **Immunogen**

A human recombinant protein of amino acids 1-297 was used as the immunogen for the CDK1 antibody.

## **Storage**

Aliquot the CDK1 antibody and store frozen at -20oC or colder. Avoid repeated freeze-thaw cycles.