

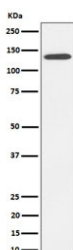
## CDH4 Antibody / Cadherin-4 / R-Cadherin [clone 28C73] (RQ8523)

Catalog No.	Formulation	Size
RQ8523	Antibody in PBS with 0.02% sodium azide, 50% glycerol and 0.4-0.5mg/ml BSA	100 ul

Recombinant RABBIT MONOCLONAL

[Bulk quote request](#)

Availability	1-3 days
Species Reactivity	Human
Format	Purified
Clonality	Recombinant Rabbit Monoclonal
Isotype	Rabbit IgG
Clone Name	28C73
Purity	Affinity chromatography
UniProt	P55283
Applications	Western Blot : 1:500-1:2000
Limitations	This CDH4 antibody is available for research use only.



Western blot testing of human HepG2 cell lysate with CDH4 antibody. Expected molecular weight: 100-140 kDa depending on glycosylation level.

### Description

Cadherins are calcium-dependent cell adhesion proteins. They preferentially interact with themselves in a homophilic manner in connecting cells; cadherins may thus contribute to the sorting of heterogeneous cell types. May play an important role in retinal development. [UniProt]

### Application Notes

Optimal dilution of the CDH4 antibody should be determined by the researcher.

## **Immunogen**

A synthetic peptide from human Cadherin-4 protein was used as the immunogen for the CDH4 antibody.

## **Storage**

Store the CDH4 antibody at -20oC.