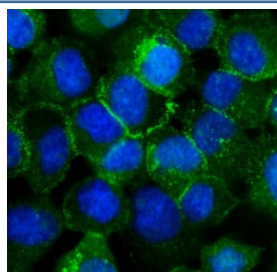


## CDH3 Antibody / Cadherin 3 / P Cadherin (RQ4549)

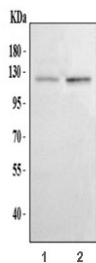
Catalog No.	Formulation	Size
RQ4549	0.5mg/ml if reconstituted with 0.2ml sterile DI water	100 ug

**Bulk quote request**

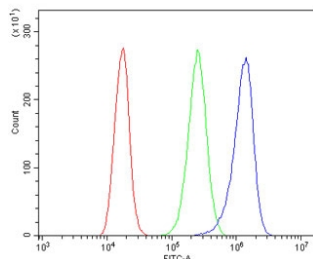
<b>Availability</b>	1-3 business days
<b>Species Reactivity</b>	Human
<b>Format</b>	Antigen affinity purified
<b>Clonality</b>	Polyclonal (rabbit origin)
<b>Isotype</b>	Rabbit IgG
<b>Purity</b>	Antigen affinity purified
<b>Buffer</b>	Lyophilized from 1X PBS with 2% Trehalose and 0.025% sodium azide
<b>UniProt</b>	P22223
<b>Localization</b>	Cell surface, Cytoplasmic
<b>Applications</b>	Western Blot : 0.5-1ug/ml Immunofluorescence (FFPE) : 2-5ug/ml Flow Cytometry : 1-3ug/million cells Direct ELISA : 0.1-0.5ug/ml (recombinant human protein)
<b>Limitations</b>	This CDH3 antibody is available for research use only.



Immunofluorescent staining of FFPE human A431 cells with CDH3 antibody (green) and DAPI nuclear stain (blue). HIER: steam section in pH6 citrate buffer for 20 min.



Western blot testing of human 1) A431 and 2) HaCaT cell lysate with CDH3 antibody.  
Expected molecular weight: ~91 kDa (unmodified), 100~130 kDa (glycosylated).



Flow cytometry testing of human A431 cells with CDH3 antibody at 1ug/million cells (blocked with goat sera); Red=cells alone, Green=isotype control, Blue= CDH3 antibody.

## Description

Cadherins, such as CDH3, are integral membrane glycoproteins responsible for calcium-dependent cell-cell adhesion. Cadherin-3 is a protein that in humans is encoded by the CDH3 gene. This gene is a classical cadherin from the cadherin superfamily. The encoded protein is a calcium-dependent cell-cell adhesion glycoprotein composed of five extracellular cadherin repeats, a transmembrane region and a highly conserved cytoplasmic tail. This gene is located in a six-cadherin cluster in a region on the long arm of chromosome 16 that is involved in loss of heterozygosity events in breast and prostate cancer. In addition, aberrant expression of this protein is observed in cervical adenocarcinomas. Mutations in this gene have been associated with congenital hypotrichosis with juvenile macular dystrophy.

## Application Notes

Optimal dilution of the CDH3 antibody should be determined by the researcher.

## Immunogen

Amino acids Q126-H336 from the human protein were used as the immunogen for the CDH3 antibody.

## Storage

After reconstitution, the CDH3 antibody can be stored for up to one month at 4oC. For long-term, aliquot and store at -20oC. Avoid repeated freezing and thawing.