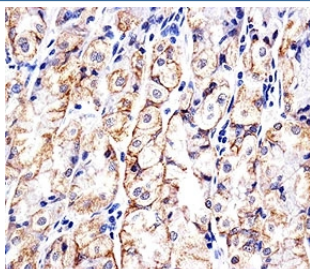


## CDH1 Antibody [clone 813CT11.1.3] (F52228)

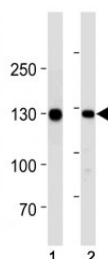
Catalog No.	Formulation	Size
F52228-0.4ML	In 1X PBS, pH 7.4, with 0.09% sodium azide	0.4 ml
F52228-0.08ML	In 1X PBS, pH 7.4, with 0.09% sodium azide	0.08 ml

[Bulk quote request](#)

<b>Availability</b>	1-3 business days
<b>Species Reactivity</b>	Human, Mouse
<b>Format</b>	Purified
<b>Clonality</b>	Monoclonal (mouse origin)
<b>Isotype</b>	Mouse IgG1, k
<b>Clone Name</b>	813CT11.1.3
<b>Purity</b>	Purified
<b>UniProt</b>	P12830
<b>Localization</b>	Cytoplasmic, membranous
<b>Applications</b>	IHC (Paraffin) : 1:25 Western Blot : 1:1000
<b>Limitations</b>	This CDH1 antibody is available for research use only.



Immunohistochemical analysis of paraffin-embedded human stomach using CDH1 antibody at 1:25 dilution.



CDH1 antibody western blot analysis in (1) human WiDr cell line and (2) mouse stomach tissue lysate. Expected molecular weight: 135 kDa (precursor), 80-120 kDa (mature, depending on glycosylation level).

## Description

Cadherins are calcium-dependent cell adhesion proteins. They preferentially interact with themselves in a homophilic manner in connecting cells; cadherins may thus contribute to the sorting of heterogeneous cell types. CDH1 is involved in mechanisms regulating cell-cell adhesions, mobility and proliferation of epithelial cells. Has a potent invasive suppressor role. It is a ligand for integrin alpha-E/beta-7. E-Cad/CTF2 promotes non-amyloidogenic degradation of Abeta precursors. Has a strong inhibitory effect on APP C99 and C83 production.

## Application Notes

Titration of the CDH1 antibody may be required due to differences in protocols and secondary/substrate sensitivity.

## Immunogen

Purified His-tagged protein was used to produce this monoclonal CDH1 antibody.

## Storage

Aliquot the CDH1 antibody and store frozen at -20°C or colder. Avoid repeated freeze-thaw cycles.