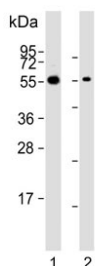


## CDC73 Antibody (F54262)

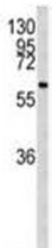
Catalog No.	Formulation	Size
F54262-0.4ML	In 1X PBS, pH 7.4, with 0.09% sodium azide	0.4 ml
F54262-0.08ML	In 1X PBS, pH 7.4, with 0.09% sodium azide	0.08 ml

[Bulk quote request](#)

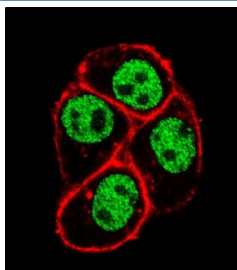
<b>Availability</b>	1-3 business days
<b>Species Reactivity</b>	Human
<b>Format</b>	Purified
<b>Clonality</b>	Polyclonal (rabbit origin)
<b>Isotype</b>	Rabbit Ig
<b>Purity</b>	Antigen affinity purified
<b>UniProt</b>	Q6P1J9
<b>Gene ID</b>	79577
<b>Localization</b>	Nuclear
<b>Applications</b>	Western Blot : 1:1000-1:2000 Immunohistochemistry (FFPE) : 1:25 Flow Cytometry : 1:25 (1x10 <sup>6</sup> cells) Immunofluorescence : 1:25
<b>Limitations</b>	This CDC73 antibody is available for research use only.



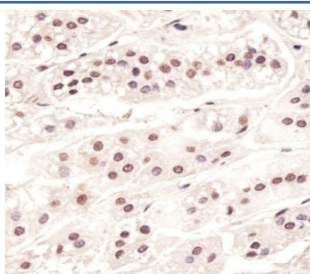
Western blot testing of human 1) 293T and 2) TT cell lysate with CDC73 antibody.  
Predicted molecular weight ~61 kDa.



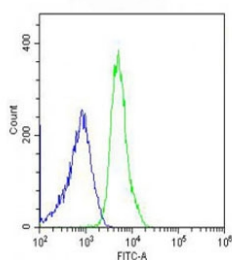
Western blot testing of human 293 cell lysate with CDC73 antibody. Predicted molecular weight ~61 kDa.



Immunofluorescent staining of fixed and permeabilized human HeLa cells with CDC73 antibody (green) and anti-Actin (red).



IHC testing of FFPE human adrenal gland tissue with CDC73 antibody. HIER: steam section in pH6 citrate buffer for 20 min and allow to cool prior to staining.



Flow cytometry testing of fixed and permeabilized human U-2 OS cells with CDC73 antibody; Blue=isotype control, Green= CDC73 antibody.

## Description

CDC73 encodes a tumor suppressor that is involved in transcriptional and post-transcriptional control pathways. The protein is a component of the the PAF protein complex, which associates with the RNA polymerase II subunit POLR2A and with a histone methyltransferase complex. This protein appears to facilitate the association of 3' mRNA processing factors with actively-transcribed chromatin.

## Application Notes

The stated application concentrations are suggested starting points. Titration of the CDC73 antibody may be required due to differences in protocols and secondary/substrate sensitivity.

## Immunogen

A portion of amino acids 132-161 from the human protein were used as the immunogen for the CDC73 antibody.

## Storage

Aliquot the CDC73 antibody and store frozen at -20oC or colder. Avoid repeated freeze-thaw cycles.

