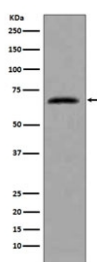


CDC7 Antibody [clone BGF-3] (RQ4689)

Catalog No.	Formulation	Size
RQ4689	Antibody in PBS with 0.02% sodium azide, 50% glycerol and 0.4-0.5mg/ml BSA	100 ul

[Bulk quote request](#)

Availability	1-2 weeks
Species Reactivity	Human
Format	Purified
Clonality	Rabbit Monoclonal
Isotype	Rabbit IgG
Clone Name	BGF-3
Purity	Affinity purified
UniProt	O00311
Applications	Western Blot : 1:1000-1:2000
Limitations	This CDC7 antibody is available for research use only.



Western blot testing of human HeLa cell lysate with CDC7 antibody. Predicted molecular weight ~64 kDa.

Description

This gene encodes Cell division cycle 7-related protein kinase, a cell division cycle protein with kinase activity that is critical for the G1/S transition. The yeast homolog is also essential for initiation of DNA replication as cell division occurs. Overexpression of this gene product may be associated with neoplastic transformation for some tumors. [RefSeq]

Application Notes

Optimal dilution of the CDC7 antibody should be determined by the researcher.

Immunogen

A synthetic peptide specific to human Cell division cycle 7-related protein kinase was used as the immunogen for the CDC7 antibody.

Storage

Store the CDC7 antibody at -20oC.