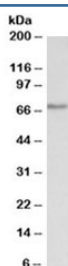


CDC6 Antibody (R35658)

Catalog No.	Formulation	Size
R35658-100UG	0.5 mg/ml in 1X TBS, pH7.3, with 0.5% BSA (US sourced) and 0.02% sodium azide	100 ug

[Bulk quote request](#)

Availability	1-3 business days
Species Reactivity	Human
Format	Antigen affinity purified
Clonality	Polyclonal (goat origin)
Isotype	Goat Ig
Purity	Antigen affinity
Gene ID	990
Applications	Western Blot : 0.01-0.03ug/ml ELISA (peptide) LOD : 1:128000
Limitations	This CDC6 antibody is available for research use only.



Western blot testing of nuclear Jurkat lysate with CDC6 antibody at 0.01ug/ml. Predicted molecular weight ~62 kDa.

Description

Additional name(s) for this target protein: Cell division cycle 6

Application Notes

Optimal dilution of the CDC6 antibody should be determined by the researcher.

Immunogen

Amino acids RKSQEITTNSEQRCP were used as the immunogen for this CDC6 antibody.

Storage

Aliquot and store the CDC6 antibody at -20oC.