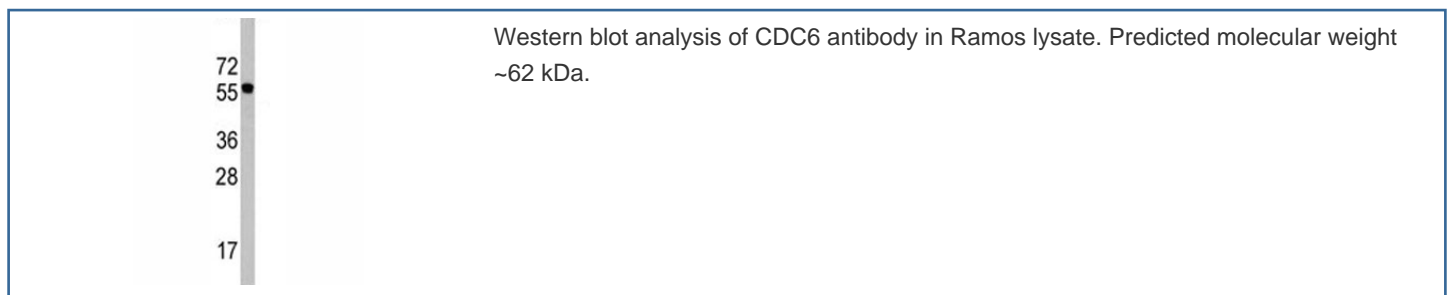


CDC6 Antibody (F49544)

Catalog No.	Formulation	Size
F49544-0.4ML	In 1X PBS, pH 7.4, with 0.09% sodium azide	0.4 ml
F49544-0.08ML	In 1X PBS, pH 7.4, with 0.09% sodium azide	0.08 ml

[Bulk quote request](#)

Availability	1-3 business days
Species Reactivity	Human
Format	Antigen affinity purified
Host	Rabbit
Clonality	Polyclonal (rabbit origin)
Isotype	Rabbit Ig
Purity	Antigen affinity
UniProt	Q99741
Applications	Western Blot : 1:1000
Limitations	This CDC6 antibody is available for research use only.



Description

Human CDC6 is highly similar to *Saccharomyces cerevisiae* Cdc6, a protein essential for the initiation of DNA replication. This protein functions as a regulator at the early steps of DNA replication. It localizes in cell nucleus during cell cycle G1, but translocates to the cytoplasm at the start of S phase. The subcellular translocation of this protein during cell cycle is regulated through its phosphorylation by Cdks. Transcription of this protein was reported to be regulated in response to mitogenic signals through transcriptional control mechanism involving E2F proteins.

Application Notes

Titration of the CDC6 antibody may be required due to differences in protocols and secondary/substrate sensitivity.

Immunogen

A portion of amino acids 32-61 from the human protein was used as the immunogen for this CDC6 antibody.

Storage

Aliquot the CDC6 antibody and store frozen at -20oC or colder. Avoid repeated freeze-thaw cycles.