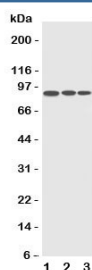


## CDC5L Antibody / Cell division cycle 5-like protein (R31236)

| Catalog No. | Formulation   | Size   |
|-------------|---|--------|
| R31236      | 0.5mg/ml if reconstituted with 0.2ml sterile DI water | 100 ug |

**Bulk quote request**

|                           |  |
|---------------------------|--|
| <b>Availability</b>       | 1-3 business days  |
| <b>Species Reactivity</b> | Human, Rat   |
| <b>Format</b>             | Antigen affinity purified  |
| <b>Clonality</b>          | Polyclonal (rabbit origin)   |
| <b>Isotype</b>            | Rabbit IgG   |
| <b>Purity</b>             | Antigen affinity   |
| <b>Buffer</b>             | Lyophilized from 1X PBS with 2.5% BSA and 0.025% sodium azide/thimerosal |
| <b>UniProt</b>            | Q99459   |
| <b>Applications</b>       | Western Blot : 0.5-1ug/ml  |
| <b>Limitations</b>        | This CDC5L antibody is available for research use only.                  |



Western blot testing of CDC5L antibody and Lane 1: HeLa; 2: Raji; 3: A549 cell lysate.  
Predicted/observed size ~88KD

## Description

Cell division cycle 5-like protein, also called PCDC5RP or CDC5-like, is a protein that in humans is encoded by the CDC5L gene. The gene was mapped to chromosome 6p21 by fluorescence in situ hybridization. This DNA-binding protein involved in cell cycle control. It may act as a transcription activator. The Component of the PRP19-CDC5L complex forms an integral part of the spliceosome and is required for activating pre-mRNA splicing. The role of CDC5 in regulating Rho1 is likely to be relevant to cytokinesis and asymmetric cell division in other organisms.

## Application Notes

The stated application concentrations are suggested starting amounts. Titration of the CDC5L antibody may be required

due to differences in protocols and secondary/substrate sensitivity.

## Immunogen

An amino acid sequence from the C-terminus of human Cell division cycle 5-like protein (KELQHRYADLLLEKETLKSKF) was used as the immunogen for this CDC5L antibody.

## Storage

After reconstitution, the CDC5L antibody can be stored for up to one month at 4°C. For long-term, aliquot and store at -20°C. Avoid repeated freezing and thawing.