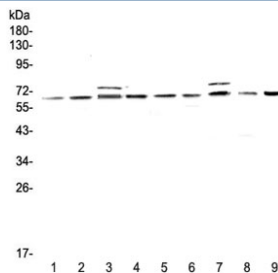


CDC45 Antibody / PORC-PI-1 (RQ4295)

Catalog No.	Formulation	Size
RQ4295	0.5mg/ml if reconstituted with 0.2ml sterile DI water	100 ug

[Bulk quote request](#)

Availability	1-3 business days
Species Reactivity	Mouse, Rat
Predicted Reactivity	Human
Format	Antigen affinity purified
Host	Rabbit
Clonality	Polyclonal (rabbit origin)
Isotype	Rabbit IgG
Purity	Antigen affinity purified
Buffer	Lyophilized from 1X PBS with 2% Trehalose and 0.025% sodium azide
UniProt	O75419
Localization	Cytoplasm, nucleus
Applications	Western Blot : 0.5-1ug/ml Direct ELISA : 0.1-0.5ug/ml
Limitations	This CDC45 antibody is available for research use only.



Western blot testing of rat 1) testis, 2) thymus, 3) brain, 4) lung and mouse 5) testis, 6) thymus, 7) brain, 8) lung and 9) HEPA1-6 lysate with CDC45 antibody at 0.5ug/ml. Predicted molecular weight ~66 kDa.

Description

Cell division control protein 45 homolog was identified by its strong similarity with *Saccharomyces cerevisiae* Cdc45, an essential protein required to the initiation of DNA replication. Cdc45 is a member of the highly conserved multiprotein

complex including Cdc6/Cdc18, the minichromosome maintenance proteins (MCMs) and DNA polymerase, which is important for early steps of DNA replication in eukaryotes. This protein has been shown to interact with MCM7 and DNA polymerase alpha. Studies of the similar gene in *Xenopus* suggested that this protein play a pivotal role in the loading of DNA polymerase alpha onto chromatin. Alternate splicing results in multiple transcript variants.

Application Notes

Optimal dilution of the CDC45 antibody should be determined by the researcher.

Immunogen

A recombinant human protein corresponding to amino acids E166-A431 was used as the immunogen for the CDC45 antibody.

Storage

After reconstitution, the CDC45 antibody can be stored for up to one month at 4oC. For long-term, aliquot and store at -20oC. Avoid repeated freezing and thawing.