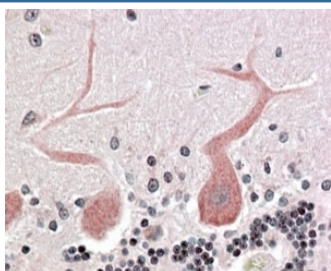


CDC42BPA Antibody (R35900)

Catalog No.	Formulation	Size
R35900-100UG	0.5 mg/ml in 1X TBS, pH7.3, with 0.5% BSA (US sourced) and 0.02% sodium azide	100 ug

[Bulk quote request](#)

Availability	1-3 business days
Species Reactivity	Human
Predicted Reactivity	Cow, Dog, Mouse, Rat
Format	Antigen affinity purified
Clonality	Polyclonal (goat origin)
Isotype	Goat Ig
Purity	Antigen affinity
Gene ID	8476
Applications	Immunohistochemistry (FFPE) : 3-6ug/ml ELISA (peptide) LOD : 1:16000
Limitations	This CDC42BPA antibody is available for research use only.



IHC testing of FFPE human cerebellum with CDC42BPA antibody at 4ug/ml. HIER: steamed with pH6 citrate buffer, AP-staining.

Description

Additional name(s) for this target protein: Cdc42-binding kinase alpha

Application Notes

Optimal dilution of the CDC42BPA antibody should be determined by the researcher.

Immunogen

Amino acids SGEVRLRQLEQFI were used as the immunogen for this CDC42BPA antibody.

Storage

Aliquot and store the CDC42BPA antibody at -20oC.