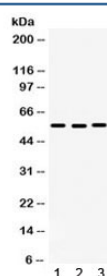


CDC25C Antibody (R32057)

Catalog No.	Formulation	Size
R32057	0.5mg/ml if reconstituted with 0.2ml sterile DI water	100 ug

Bulk quote request

Availability	1-3 business days
Species Reactivity	Human
Format	Antigen affinity purified
Clonality	Polyclonal (rabbit origin)
Isotype	Rabbit IgG
Purity	Antigen affinity
Buffer	Lyophilized from 1X PBS with 2.5% BSA and 0.025% sodium azide
UniProt	P30307
Applications	Western Blot : 0.1-0.5ug/ml
Limitations	This CDC25C antibody is available for research use only.



Western blot testing of human 1) HeLa, 2) SW620 and 3) MCF7 lysate with CDC25C antibody. Expected molecular weight: ~53/60 kDa (unmodified/phosphorylated).

Description

M-phase inducer phosphatase 3 is an enzyme that in humans is encoded by the CDC25C gene. This gene is highly conserved during evolution and it plays a key role in the regulation of cell division. The encoded protein is a tyrosine phosphatase and belongs to the Cdc25 phosphatase family. It directs dephosphorylation of cyclin B-bound CDC2 (CDK1) and triggers entry into mitosis. Also, it is thought to suppress p53-induced growth arrest. Multiple alternatively spliced transcript variants of this gene have been described, however, the full-length nature of many of them is not known.

Application Notes

Optimal dilution of the CDC25C antibody should be determined by the researcher.

Immunogen

Amino acids MHHQDHKTELLRCRSQSKVQEGERQLREQIALLVKDMSP of human CDC25C were used as the immunogen for the CDC25C antibody.

Storage

After reconstitution, the CDC25C antibody can be stored for up to one month at 4oC. For long-term, aliquot and store at -20oC. Avoid repeated freezing and thawing.