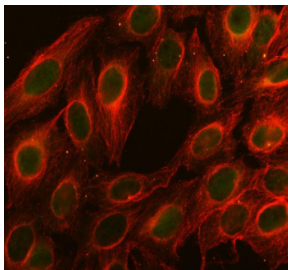


## CDC25C Antibody / Cell division cycle 25 (R32056)

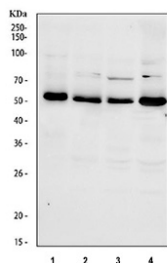
Catalog No.	Formulation	Size
R32056	0.5mg/ml if reconstituted with 0.2ml sterile DI water	100 ug

[Bulk quote request](#)

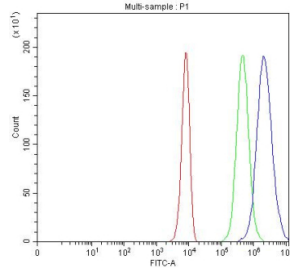
<b>Availability</b>	1-3 business days
<b>Species Reactivity</b>	Human
<b>Format</b>	Antigen affinity purified
<b>Host</b>	Rabbit
<b>Clonality</b>	Polyclonal (rabbit origin)
<b>Isotype</b>	Rabbit IgG
<b>Purity</b>	Antigen affinity
<b>Buffer</b>	Lyophilized from 1X PBS with 2% Trehalose
<b>UniProt</b>	P30307
<b>Applications</b>	Western Blot : 0.5-1ug/ml Immunofluorescence : 5ug/ml Flow Cytometry : 1-3ug/million cells
<b>Limitations</b>	This CDC25C antibody is available for research use only.



Immunofluorescent staining of FFPE human U-2 OS cells with CDC25 antibody (green) and Alpha Tubulin mAb (red). HIER: steam section in pH6 citrate buffer for 20 min.



Western blot testing of human 1) 293T, 2) HeLa, 3) HepG2 and 4) K562 cell lysate with CDC25C antibody. Expected molecular weight: ~53/60 kDa (unmodified/phosphorylated).



Flow cytometry testing of fixed and permeabilized human K562 cells with CDC25C antibody at 1ug/million cells (blocked with goat sera); Red=cells alone, Green=isotype control, Blue= CDC25C antibody.

## Description

Cell division cycle 25 (CDC25) is a dual-specificity phosphatase that plays a pivotal role in cell cycle regulation. It activates cyclin-dependent kinases (CDKs) by removing inhibitory phosphate groups, thereby promoting progression through key cell cycle checkpoints. CDC25 exists in three isoforms—CDC25A, CDC25B, and CDC25C—each functioning at distinct phases of the cycle.

CDC25 activity is tightly regulated by phosphorylation, proteolysis, and subcellular localization to ensure proper timing of cell cycle transitions. Dysregulation of CDC25 expression or function has been linked to uncontrolled cell proliferation, genomic instability, and cancer, making it a significant focus of oncology and cell biology research.

Using a high-quality CDC25 antibody enables precise detection in applications such as western blot, immunohistochemistry, and immunofluorescence. A CDC25 antibody from NSJ Bioreagents ensures sensitivity and reproducibility for studies in cell cycle control, checkpoint signaling, and cancer biology. Selecting the right CDC25 antibody is essential for generating accurate and consistent research data.

## Application Notes

Optimal dilution of the CDC25C antibody should be determined by the researcher.

## Immunogen

Amino acids 175-473 of human CDC25C were used as the immunogen for the CDC25C antibody.

## Storage

After reconstitution, the CDC25C antibody can be stored for up to one month at 4°C. For long-term, aliquot and store at -20°C. Avoid repeated freezing and thawing.