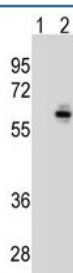


CDC25C Antibody [clone 233CT9.6.6] (F53552)

Catalog No.	Formulation	Size
F53552-0.1ML	In ascites with 0.09% sodium azide	0.1 ml

Bulk quote request

Availability	1-3 business days
Species Reactivity	Human
Format	Ascites
Clonality	Monoclonal (mouse origin)
Isotype	Mouse IgG1, k
Clone Name	233CT9.6.6
Purity	Ascites
UniProt	P30307
Applications	Western Blot : 1:1000-1:8000
Limitations	This CDC25C antibody is available for research use only.



Western blot analysis of CDC25C antibody and 293 cell lysate (2 ug/lane) either nontransfected (Lane 1) or transiently transfected (2) with the CDC25C gene. Expected molecular weight: ~53/60 kDa (unmodified/phosphorylated).

Description

This gene is highly conserved during evolution and it plays a key role in the regulation of cell division. The encoded protein is a tyrosine phosphatase and belongs to the Cdc25 phosphatase family. It directs dephosphorylation of cyclin B-bound CDC2 and triggers entry into mitosis. It is also thought to suppress p53-induced growth arrest. Multiple alternatively spliced transcript variants of this gene have been described, however, the full-length nature of many of them is not known. [provided by RefSeq].

Application Notes

Titration of the CDC25C antibody may be required due to differences in protocols and secondary/substrate sensitivity.

Immunogen

This CDC25C antibody was produced from mouse immunized with CDC25C recombinant protein.

Storage

Aliquot the CDC25C antibody and store frozen at -20oC or colder. Avoid repeated freeze-thaw cycles.