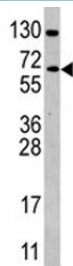


CDC25B Antibody / M-phase inducer phosphatase 2 (F50239)

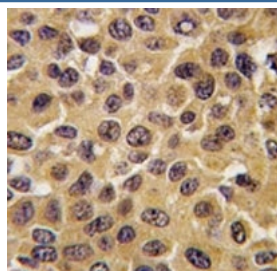
Catalog No.	Formulation	Size
F50239-0.4ML	In 1X PBS, pH 7.4, with 0.09% sodium azide	0.4 ml
F50239-0.08ML	In 1X PBS, pH 7.4, with 0.09% sodium azide	0.08 ml

Bulk quote request

Availability	1-3 business days
Species Reactivity	Human
Format	Antigen affinity purified
Clonality	Polyclonal (rabbit origin)
Isotype	Rabbit Ig
Purity	Antigen affinity
UniProt	P30305
Localization	Cytoplasmic
Applications	Western Blot : 1:1000 IHC (Paraffin) : 1:10-1:50
Limitations	This CDC25B antibody is available for research use only.



Western blot analysis of CDC25B antibody and Ramos lysate. Expected/observed molecular weight: 61~67kDa (isoforms 1-4).



IHC analysis of FFPE human breast carcinoma tissue stained with CDC25B antibody

Description

CDC25B is a member of the CDC25 family of phosphatases. CDC25B activates the cyclin dependent kinase CDC2 by removing two phosphate groups and it is required for entry into mitosis. CDC25B shuttles between the nucleus and the cytoplasm due to nuclear localization and nuclear export signals. The protein is nuclear in the M and G1 phases of the cell cycle and moves to the cytoplasm during S and G2. CDC25B has oncogenic properties, although its role in tumor formation has not been determined.

Application Notes

Titration of the CDC25B antibody may be required due to differences in protocols and secondary/substrate sensitivity.

Immunogen

A portion of amino acids 331-360 from the human protein was used as the immunogen for this CDC25B antibody.

Storage

Aliquot the CDC25B antibody and store frozen at -20oC or colder. Avoid repeated freeze-thaw cycles.