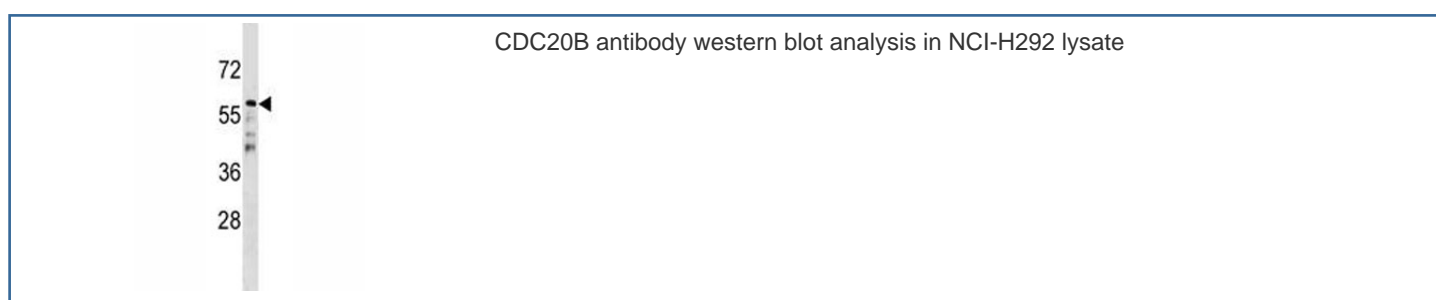


CDC20B Antibody (F45698)

| Catalog No. | Formulation | Size |
|---------------|--|---------|
| F45698-0.4ML | In 1X PBS, pH 7.4, with 0.09% sodium azide | 0.4 ml |
| F45698-0.08ML | In 1X PBS, pH 7.4, with 0.09% sodium azide | 0.08 ml |

[Bulk quote request](#)

| | |
|---------------------------|--|
| Availability | 1-3 business days |
| Species Reactivity | Human |
| Format | Antigen affinity purified |
| Clonality | Polyclonal (rabbit origin) |
| Isotype | Rabbit Ig |
| Purity | Antigen affinity |
| UniProt | Q86Y33 |
| Applications | Western Blot : 1:1000 |
| Limitations | This CDC20B antibody is available for research use only. |



Description

The timely destruction of key regulators through ubiquitin-mediated proteolysis ensures the orderly progression of the cell cycle. The APC (anaphase-promoting complex) is a major component of this degradation machinery and its activation is required for the execution of critical events. CDC20B has been implicated as a meiosis specific activator of APC and is required for sporulation in budding yeast.

Application Notes

Titration of the CDC20B antibody may be required due to differences in protocols and secondary/substrate sensitivity.

Immunogen

A portion of amino acids 11-39 from the human protein was used as the immunogen for this CDC20B antibody.

Storage

Aliquot the CDC20B antibody and store frozen at -20oC or colder. Avoid repeated freeze-thaw cycles.