

## CDC20 Antibody (F51546)

Catalog No.	Formulation	Size
F51546-0.4ML	In 1X PBS, pH 7.4, with 0.09% sodium azide	0.4 ml
F51546-0.08ML	In 1X PBS, pH 7.4, with 0.09% sodium azide	0.08 ml

[Bulk quote request](#)

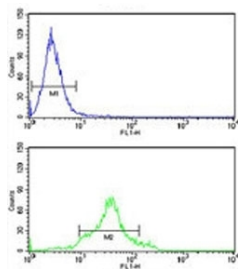
<b>Availability</b>	1-3 business days
<b>Species Reactivity</b>	Human
<b>Predicted Reactivity</b>	Pig
<b>Format</b>	Antigen affinity purified
<b>Host</b>	Rabbit
<b>Clonality</b>	Polyclonal (rabbit origin)
<b>Isotype</b>	Rabbit Ig
<b>Purity</b>	Antigen affinity
<b>UniProt</b>	Q12834
<b>Applications</b>	Western Blot : 1:1000 Flow Cytometry : 1:10-1:50
<b>Limitations</b>	This CDC20 antibody is available for research use only.



Western blot analysis of CDC20 antibody and 293 cell lysate either nontransfected (Lane 1) or transiently transfected (2) with the CDC20 gene.



Western blot analysis of CDC20 antibody and HeLa lysate.



CDC20 antibody flow cytometry analysis of HeLa cells (green) compared to a [negative control](#) (blue). FITC-conjugated goat-anti-rabbit secondary Ab was used for the analysis.

## Description

CDC20 is an activating regulatory factor for the APC/C (anaphase promoting complex/cyclosome). It activates the ubiquitination activity of the APC/C. CDC20 confers a strict destruction-box (D-box) dependence on APC. Levels of CDC20, as well as its binding to APC, peak in mitosis and decrease drastically at early G1.

## Application Notes

Titration of the CDC20 antibody may be required due to differences in protocols and secondary/substrate sensitivity.

## Immunogen

A portion of amino acids 57-84 from the human protein was used as the immunogen for this CDC20 antibody.

## Storage

Aliquot the CDC20 antibody and store frozen at -20oC or colder. Avoid repeated freeze-thaw cycles.