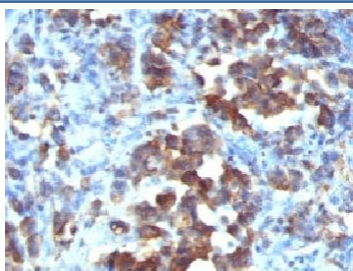


Cdc20 Antibody [clone CDC20/1102] (V3041)

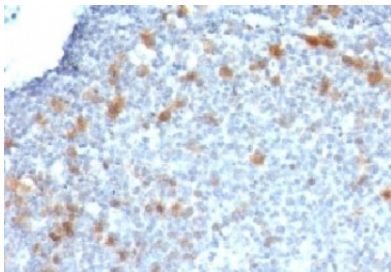
Catalog No.	Formulation	Size
V3041-100UG	0.2 mg/ml in 1X PBS with 0.1 mg/ml BSA (US sourced) and 0.05% sodium azide	100 ug
V3041-20UG	0.2 mg/ml in 1X PBS with 0.1 mg/ml BSA (US sourced) and 0.05% sodium azide	20 ug
V3041SAF-100UG	1 mg/ml in 1X PBS; BSA free, sodium azide free	100 ug
V3041IHC-7ML	Prediluted in 1X PBS with 0.1 mg/ml BSA (US sourced) and 0.05% sodium azide; *For IHC use only*	7 ml

[Bulk quote request](#)

Availability	1-3 business days
Species Reactivity	Human
Format	Purified
Host	Mouse
Clonality	Monoclonal (mouse origin)
Isotype	Mouse IgG1, kappa
Clone Name	CDC20/1102
Purity	Protein G affinity chromatography
UniProt	Q12834
Localization	Cytoplasmic
Applications	Immunohistochemistry (FFPE) : 2-4ug/ml for 30 min at RT
Limitations	This Cdc20 antibody is available for research use only.



IHC: Formalin-fixed, paraffin-embedded human gastric carcinoma stained with Cdc20 antibody (CDC20/1102)



IHC: Formalin-fixed, paraffin-embedded human tonsil stained with Cdc20 antibody (CDC20/1102)

Description

Cyclins, regulatory subunits, which associate with kinases, control many of the important steps in cell cycle progression. The Cdc2 protein kinase (p34Cdc2) exhibits protein kinase activity in vitro and exists in a complex with both cyclin B and a protein homologous to p13SUC1. Cdc2 kinase is the active subunit of the M phase promoting factor (MPF) and the M phase-specific Histone H1 kinase. The p34Cdc2/cyclin B complex is required for the G2 to M transition. An additional cell cycle-dependent protein kinase, termed p55cdc, exhibits a high degree of homology with the *S. cerevisiae* proteins Cdc20 and Cdc4. The p55cdc transcript is readily detectable in a variety of cultured cell lines in growth phase, but disappears when cell growth is chemically arrested.

Application Notes

Optimal dilution of the Cdc20 antibody should be determined by the researcher.

1. Staining of formalin-fixed tissues requires boiling tissue sections in pH 9 10mM Tris with 1mM EDTA for 10-20 min followed by cooling at RT for 20 min.
2. The prediluted format is supplied in a dropper bottle and is optimized for use in IHC. After epitope retrieval step (if required), drip mAb solution onto the tissue section and incubate at RT for 30 min.

Immunogen

Recombinant human protein was used as the immunogen for the Cdc20 antibody.

Storage

Store the Cdc20 antibody at 2-8°C (with azide) or aliquot and store at -20°C or colder (without azide).