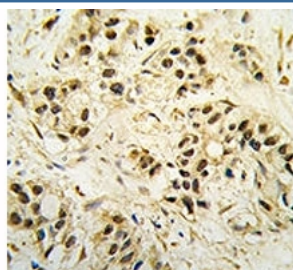


CDC2 Antibody / CDK1 (F50473)

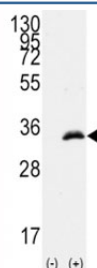
Catalog No.	Formulation	Size
F50473-0.4ML	In 1X PBS, pH 7.4, with 0.09% sodium azide	0.4 ml
F50473-0.08ML	In 1X PBS, pH 7.4, with 0.09% sodium azide	0.08 ml

[Bulk quote request](#)

Availability	1-3 business days
Species Reactivity	Human
Predicted Reactivity	Mouse, Rat, Bovine, Chicken, Xenopus, Drosophila
Format	Antigen affinity purified
Clonality	Polyclonal (rabbit origin)
Isotype	Rabbit Ig
Purity	Antigen affinity
UniProt	P06493
Applications	Western Blot : 1:1000 IHC (Paraffin) : 1:10-1:50
Limitations	This CDC2 antibody is available for research use only.



IHC analysis of FFPE human breast carcinoma tissue stained with CDC2 antibody



Western blot analysis of CDC2 antibody and 293 cell lysate (2 ug/lane) either nontransfected (Lane 1) or transiently transfected with the human gene (2).

Description

CDK1/CDC2 is a member of the Ser/Thr protein kinase family. This protein is a catalytic subunit of the highly conserved protein kinase complex known as M-phase promoting factor (MPF), which is essential for G1/S and G2/M phase transitions of eukaryotic cell cycle. Mitotic cyclins stably associate with this protein and function as regulatory subunits. The kinase activity of this protein is controlled by cyclin accumulation and destruction through the cell cycle. The phosphorylation and dephosphorylation of this protein also play important regulatory roles in cell cycle control.

Application Notes

Titration of the CDC2 antibody may be required due to differences in protocols and secondary/substrate sensitivity.

Immunogen

A portion of amino acids 1-30 from the human protein was used as the immunogen for this CDC2 antibody.

Storage

Aliquot the CDC2 antibody and store frozen at -20oC or colder. Avoid repeated freeze-thaw cycles.