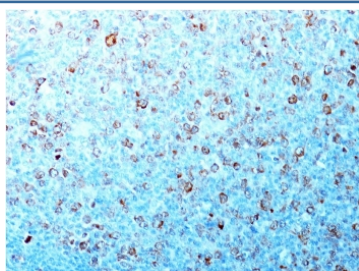


CDC2 Antibody / CDK1 [clone CDK1/873] (V3040)

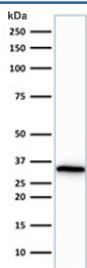
Catalog No.	Formulation	Size
V3040-100UG	0.2 mg/ml in 1X PBS with 0.1 mg/ml BSA (US sourced) and 0.05% sodium azide	100 ug
V3040-20UG	0.2 mg/ml in 1X PBS with 0.1 mg/ml BSA (US sourced) and 0.05% sodium azide	20 ug
V3040SAF-100UG	1 mg/ml in 1X PBS; BSA free, sodium azide free	100 ug

Bulk quote request

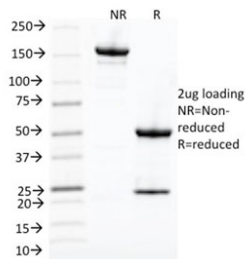
Availability	1-3 business days
Species Reactivity	Human
Format	Purified
Clonality	Monoclonal (mouse origin)
Isotype	Mouse IgG2a, kappa
Clone Name	CDK1/873
Purity	Protein G affinity chromatography
UniProt	P06493
Localization	Nuclear and cytoplasmic
Applications	Immunohistochemistry (FFPE) : 2-4ug/ml for 30 min at RT Western Blot : 1-2ug/ml
Limitations	This CDC2 antibody is available for research use only.



IHC testing of formalin-fixed, paraffin-embedded human tonsil with CDC2 antibody (CDK1/873). Staining of formalin-fixed tissues requires boiling tissue sections in pH 9 10mM Tris with 1mM EDTA for 10-20 min followed by cooling at RT for 20 min.



Western blot testing of human HeLa cell lysate with CDC2 antibody (clone CDK1/873).
Predicted molecular weight ~33 kDa.



SDS-PAGE analysis of purified, BSA-free CDC2 antibody (clone CDK1/873) as confirmation of integrity and purity.

Description

Recognizes a 34kDa protein, which is identified as cyclin dependent kinase 1 (cdk1) or p34cdc2 protein kinase. Cdc2 plays a crucial role during cell division and is most active during mitosis. It is predominantly localized in the nucleus. It is a serine/threonine kinase, which is activated by cyclin, presumably by de-phosphorylation of tyrosine residues. Activated Cdc2 performs specific functions during mitosis, including nuclear envelope breakdown and chromosome condensation.

Application Notes

Optimal dilution of the CDC2 antibody should be determined by the researcher.

Immunogen

Recombinant human protein was used as the immunogen for the CDC2 antibody.

Storage

Store the CDC2 antibody at 2-8oC (with azide) or aliquot and store at -20oC or colder (without azide).