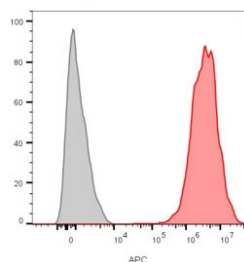


CD9 Antibody [clone CD9/1631] (V3790)

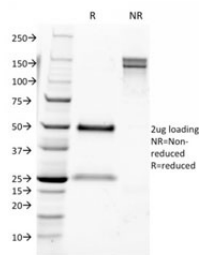
Catalog No.	Formulation	Size
V3790-100UG	0.2 mg/ml in 1X PBS with 0.1 mg/ml BSA (US sourced) and 0.05% sodium azide	100 ug
V3790-20UG	0.2 mg/ml in 1X PBS with 0.1 mg/ml BSA (US sourced) and 0.05% sodium azide	20 ug
V3790SAF-100UG	1 mg/ml in 1X PBS; BSA free, sodium azide free	100 ug

[Bulk quote request](#)

Availability	1-3 business days
Species Reactivity	Human
Format	Purified
Host	Mouse
Clonality	Monoclonal (mouse origin)
Isotype	Mouse IgG2a, kappa
Clone Name	CD9/1631
Purity	Protein G affinity chromatography
UniProt	P21926
Localization	Cell surface
Applications	ELISA (order BSA/sodium Azide-free Format For Coating) : Flow Cytometry : 1-2ug/million cells
Limitations	This CD9 antibody is available for research use only.



Flow cytometry staining of human MCF7 cells with CD9 antibody (clone CD9/1631); Gray=unstained, Red= CD9 antibody.



SDS-PAGE analysis of purified, BSA-free CD9 antibody (clone CD9/1631) as confirmation of integrity and purity.

Description

CD9 is a type IV transmembrane glycoprotein with four transmembrane domains. CD9 on pre-B cells may play a role in cell-cell adhesion. In addition, CD9 may play a role in signal transduction mediated by interaction with low molecular weight GTP binding proteins. CD9 is expressed on early B cells, eosinophils, basophils and activated T cells and is a major component of the platelet cell surface. It is also expressed on most non-T acute lymphoblastic leukemia cells and on some acute myeloid and chronic lymphoid leukemias.

Application Notes

Titration of the CD9 antibody may be required for optimal performance.

Immunogen

Recombinant full-length human protein was used as the immunogen for the CD9 antibody.

Storage

Store the CD9 antibody at 2-8°C (with azide) or aliquot and store at -20°C or colder (without azide).