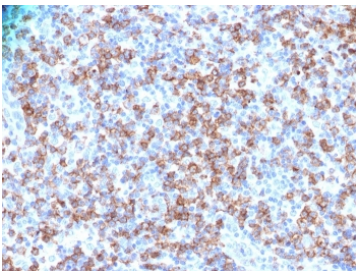


## CD8A Antibody / Effector T Cell Marker Antibody (V7612)

Catalog No.	Formulation	Size
V7612-100UG	0.2 mg/ml in 1X PBS with 0.1 mg/ml BSA (US sourced) and 0.05% sodium azide	100 ug
V7612-20UG	0.2 mg/ml in 1X PBS with 0.1 mg/ml BSA (US sourced) and 0.05% sodium azide	20 ug
V7612SAF-100UG	1 mg/ml in 1X PBS; BSA free, sodium azide free	100 ug

[Bulk quote request](#)

<b>Availability</b>	1-3 business days
<b>Species Reactivity</b>	Human
<b>Format</b>	Purified
<b>Host</b>	Rabbit
<b>Clonality</b>	Polyclonal (rabbit origin)
<b>Isotype</b>	Rabbit IgG
<b>Purity</b>	Protein A affinity chromatography
<b>UniProt</b>	P01732
<b>Localization</b>	Cell surface
<b>Applications</b>	Immunohistochemistry (FFPE) : 1-2ug/ml
<b>Limitations</b>	This CD8A Antibody / Effector T Cell Marker Antibody is available for research use only.



CD8A Antibody Human Lymphoma IHC. Immunohistochemistry analysis of CD8 alpha (CD8A) in FFPE human lymphoma tissue shows strong membranous staining of cytotoxic T lymphocytes within the tumor microenvironment, consistent with CD8-positive cells functioning as effector T cells involved in target cell recognition and elimination. Heat-induced epitope retrieval was performed in pH 9 10 mM Tris with 1 mM EDTA for 10-20 minutes followed by cooling at room temperature.

### Description

CD8 alpha (CD8A) is a transmembrane glycoprotein expressed on cytotoxic T lymphocytes, where it functions as a co-receptor for T cell receptor signaling through interaction with MHC class I molecules. CD8A Antibody / Effector T Cell

Marker Antibody is widely used to identify cytotoxic T cells with effector function, which are responsible for recognizing and eliminating target cells during immune responses. CD8A antibody, also referred to as CD8 alpha antibody or CD8 antigen antibody, provides a direct means of detecting T cells engaged in cytotoxic activity.

CD8A is localized to the plasma membrane and is closely associated with the functional state of cytotoxic T lymphocytes. Effector T cells arise following activation and differentiation, acquiring the ability to release cytotoxic molecules and produce signaling factors that mediate immune responses. Detection of CD8A therefore supports identification of T cells that are actively participating in immune effector processes.

CD8A Antibody / Effector T Cell Marker Antibody is commonly used in flow cytometry to quantify effector T cell populations, in immunohistochemistry to visualize their distribution within tissues, and in immunofluorescence to examine interactions between effector cells and their targets. These applications provide insight into the localization and abundance of cytotoxic lymphocytes within biological systems.

Effector CD8-positive T cells play central roles in host defense against intracellular pathogens and in elimination of abnormal or malignant cells. Their activity is a key component of immune function, and their presence within tissues reflects ongoing immune responses. CD8A detection is therefore widely used to assess cytotoxic T cell involvement in a variety of experimental and disease contexts.

CD8A Antibody supports analysis of immune responses in systems where effector function is a primary focus, including studies of infection, cancer, and immune regulation. It is frequently used in combination with additional markers to evaluate functional states and to distinguish effector cells from other lymphocyte populations.

Detection of CD8A-positive effector T cells provides insight into cytotoxic immune activity and the mechanisms of target cell elimination. This supports investigation of immune function and cellular responses across diverse biological conditions.

This antibody is part of a broader selection of immune cell marker antibodies designed to support studies of T cell biology, immune infiltration, and tumor immunology, including application-specific [CD8A antibody](#) reagents for IHC, FACS, WB, and IF.

## Application Notes

Optimal dilution of the CD8A Antibody / Effector T Cell Marker Antibody should be determined by the researcher.

## Immunogen

Recombinant human CD8a protein was used as the immunogen for the CD8a antibody.

## Storage

Store the CD8a antibody at 2-8°C (with azide) or aliquot and store at -20°C or colder (without azide).

## Alternate Names

CD8A effector T cell marker antibody, CD8 alpha effector lymphocyte antibody, CD8A cytotoxic effector cell antibody, CD8A immune effector marker antibody, CD8A activated effector T cell antibody

