

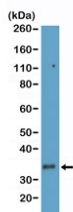
CD8A Antibody for WB / Human T Cell Lysate Antibody [clone RM397] (R20413)

Catalog No.	Formulation	Size
R20413-0.1ML	Antibody in PBS with 50% glycerol, 1% BSA and 0.09% sodium azide	100 ul

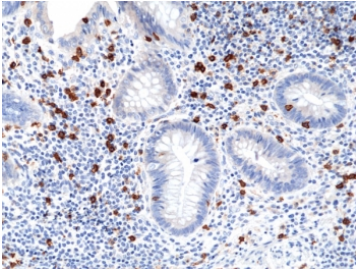
Recombinant **RABBIT MONOCLONAL**

[Bulk quote request](#)

Availability	1-3 business days
Species Reactivity	Human
Format	Purified
Host	Rabbit
Clonality	Recombinant Rabbit Monoclonal
Isotype	Rabbit IgG
Clone Name	RM397
Purity	Protein A purified from animal origin-free supernatant
UniProt	P01732
Localization	Cell surface
Applications	Immunohistochemistry (FFPE) : 1:100-1:200 Western Blot : 1:100-1:200
Limitations	This CD8A Antibody for WB / Human T Cell Lysate Antibody is available for research use only.



CD8A Antibody for WB - Human T-cell lysate. Western blot analysis of CD8 alpha (CD8A) in human T-cell lysate shows a band at approximately 26-40 kDa, consistent with the predicted molecular weight and glycosylation-dependent migration of this membrane glycoprotein. The signal reflects endogenous CD8A expression in cytotoxic T lymphocytes, supporting use in western blot analysis of human immune cell samples (clone RM397).



IHC staining of FFPE human appendix tissue with recombinant CD8a antibody at 1:100.

Description

CD8 alpha (CD8A) is a transmembrane glycoprotein expressed on cytotoxic T lymphocytes where it functions as a co-receptor for T cell receptor signaling through interaction with MHC class I molecules. CD8A Antibody for WB is widely used to detect CD8 alpha protein expression in human T cell lysates, providing a reliable method for confirming cytotoxic T cell-associated protein expression in western blot analysis. CD8A antibody, also referred to as CD8 alpha antibody or CD8 antigen antibody, is a key marker for evaluating T cell identity and immune signaling at the protein level.

CD8A is localized to the plasma membrane and undergoes post-translational modifications including glycosylation, which can influence its electrophoretic mobility. In western blot applications, CD8A detection may present as a defined band with potential variation depending on glycosylation state and sample preparation conditions. As a membrane-associated protein, efficient extraction and proper sample handling are important for optimal detection, making CD8A western blot antibody performance particularly relevant in studies involving immune cell lysates.

This recombinant rabbit monoclonal antibody, clone RM397, is designed for western blot detection of CD8A and demonstrates strong performance in human T cell lysates. Validation in human T cell-derived samples provides biologically relevant confirmation of endogenous CD8A expression, ensuring that the antibody performs effectively in physiologically relevant immune cell populations rather than overexpression systems alone. This makes CD8A Antibody for WB particularly well suited for studies focused on human immunology and translational research.

Western blot analysis of CD8A is commonly used to confirm the presence of cytotoxic T cells in mixed cell populations, validate immune cell enrichment strategies, and assess protein-level changes during T cell activation and differentiation. Detection of CD8A in human T cells supports studies investigating immune signaling pathways, antigen recognition mechanisms, and T cell-mediated cytotoxic responses.

CD8A Antibody for WB is also valuable for verifying protein expression in engineered or experimentally manipulated systems, including gene editing or stimulation-based studies where CD8 expression may be altered. When used alongside additional immune markers such as CD3 antibody or signaling pathway components, CD8A detection contributes to a more complete understanding of T cell biology at the biochemical level. The combination of human T cell validation and recombinant monoclonal specificity makes this antibody a reliable tool for consistent and reproducible western blot analysis of CD8A.

This antibody is part of a broader selection of immune cell marker antibodies designed to support studies of T cell biology, immune infiltration, and tumor immunology, including application-specific [CD8A antibody](#) reagents for IHC, FACS, WB, and IF.

Application Notes

The stated application concentrations are suggested starting points. Titration of the CD8A Antibody for WB / Human T Cell Lysate Antibody may be required due to differences in protocols and secondary/substrate sensitivity.

Immunogen

A peptide corresponding to human CD8a was used as the immunogen for the recombinant CD8a antibody.

Storage

Store the recombinant CD8a antibody at -20oC.

Alternate Names

CD8A WB antibody, CD8 alpha western blot antibody, CD8A human T cell antibody, CD8A membrane protein WB antibody, CD8A recombinant rabbit antibody