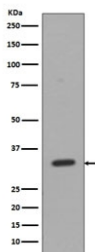


## CD8A Antibody for WB / Jurkat Cell Line Antibody [clone EAF-3] (RQ5071)

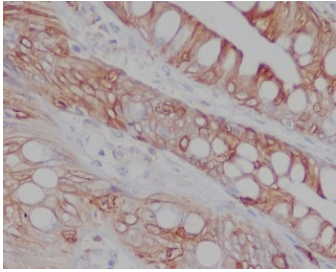
Catalog No.	Formulation	Size
RQ5071	Antibody in PBS with 0.02% sodium azide, 50% glycerol and 0.4-0.5mg/ml BSA	100 ul

[Bulk quote request](#)

<b>Availability</b>	1-2 weeks
<b>Species Reactivity</b>	Human
<b>Format</b>	Purified
<b>Host</b>	Rabbit
<b>Clonality</b>	Rabbit Monoclonal
<b>Isotype</b>	Rabbit IgG
<b>Clone Name</b>	EAF-3
<b>Purity</b>	Affinity purified
<b>UniProt</b>	P01732
<b>Localization</b>	Cell surface
<b>Applications</b>	Western Blot : 1:500-1:2000 Immunohistochemistry (FFPE) : 1:50-1:200
<b>Limitations</b>	This CD8A Antibody for WB / Jurkat Cell Line Antibody is available for research use only.



CD8A Antibody for WB - Jurkat cell lysate. Western blot analysis of CD8 alpha (CD8A) in human Jurkat cell lysate shows a band at approximately 26-35 kDa, consistent with the predicted molecular weight and glycosylation-dependent migration of this membrane glycoprotein. The signal reflects endogenous CD8A expression in this T cell leukemia model, supporting use in western blot analysis of Jurkat cells for studies of T cell signaling and immune-related pathways (clone EAF-3).



IHC staining of FFPE human colon tissue with CD8A antibody. HIER: boil tissue sections in pH6, 10mM citrate buffer, for 10-20 min and allow to cool before testing.

## Description

CD8 alpha (CD8A) is a transmembrane glycoprotein expressed on cytotoxic T lymphocytes and functions as a co-receptor for T cell receptor signaling through interaction with MHC class I molecules. CD8A Antibody for WB is widely used to detect CD8 alpha protein expression in T cell-derived cell lines, providing a consistent and reproducible system for western blot analysis of cytotoxic T cell-associated proteins. CD8A antibody, also referred to as CD8 alpha antibody or CD8 antigen antibody, is a key marker for studying immune signaling and T cell biology in controlled in vitro systems.

CD8A is localized to the plasma membrane and may exhibit variability in electrophoretic migration due to glycosylation and membrane-associated properties. In western blot applications, CD8A detection typically produces a defined band pattern with potential variation depending on protein processing and sample preparation. Proper lysis and solubilization are important for consistent detection of this membrane glycoprotein, particularly in cultured cell systems.

This recombinant rabbit monoclonal antibody, clone EAF-3, is validated for western blot detection of CD8A in Jurkat cell lysates, a widely used human T cell leukemia model. Validation in Jurkat cells provides a highly reproducible and standardized system for assessing CD8A expression, making this antibody particularly useful for mechanistic studies where experimental consistency is critical. Jurkat cells are commonly used to investigate T cell signaling pathways, activation mechanisms, and leukemia biology, further strengthening the relevance of this validation model.

CD8A Antibody for WB is especially useful in studies involving cultured T cell lines, where controlled experimental conditions allow precise investigation of protein expression and signaling dynamics. Detection of CD8A in Jurkat cells supports research into T cell receptor signaling, immune activation pathways, and the molecular basis of T cell-related diseases.

Western blot analysis of CD8A in Jurkat and related cell models is commonly used to validate experimental manipulations, including stimulation, inhibition, or genetic modification of T cells. CD8A antibody enables confirmation of protein expression changes under defined conditions, supporting detailed biochemical analysis of immune signaling networks. The combination of recombinant monoclonal specificity and Jurkat-based validation makes this antibody a reliable tool for reproducible and controlled western blot studies of CD8A.

This antibody is part of a broader selection of immune cell marker antibodies designed to support studies of T cell biology, immune infiltration, and tumor immunology, including application-specific [CD8A antibody](#) reagents for IHC, FACS, WB, and IF.

## Application Notes

Optimal dilution of the CD8A Antibody for WB / Jurkat Cell Line Antibody should be determined by the researcher.

## Immunogen

A synthetic peptide specific to human CD8 alpha / CD8A was used as the immunogen for the CD8A antibody.

## Storage

Store the CD8A antibody at -20oC.

## Alternate Names

CD8A WB antibody Jurkat, CD8 alpha leukemia cell antibody, CD8A T cell line antibody, CD8A recombinant rabbit antibody, CD8A WB antibody human cell line