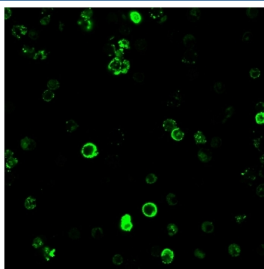


CD8a Antibody [clone C8/468] (V2043CF488)

Catalog No.	Formulation	Size
V2043CF488-100T	500 ul at 0.1 mg/ml with 0.1 mg/ml BSA (US sourced), 0.05% sodium azide	100 Tests

[Bulk quote request](#)

Availability	1-3 business days
Species Reactivity	Human
Format	CF488 Conjugate
Host	Mouse
Clonality	Monoclonal (mouse origin)
Isotype	Mouse IgG1, kappa
Clone Name	C8/468
Purity	Protein G affinity chromatography
UniProt	P01732
Localization	Cell surface
Applications	Flow Cytometry : 1-2ug/million cells Immunofluorescence : 1-3ug/ml
Limitations	This CD8a antibody is available for research use only.



Immunofluorescent staining of human PBMC with CD8a antibody + CF488-conjugated secondary (clone C8/468).

Description

CD8 is a cell surface receptor expressed either as a heterodimer with the CD8 beta chain (CD8 alpha/beta) or as a homodimer (CD8 alpha/alpha). A majority of thymocytes and a subpopulation of mature T cells and NK cells express CD8a. CD8 binds to MHC class 1 and through its association with protein tyrosine kinase p56lck plays a role in T cell development and activation of mature T cells. For mature T-cells, CD4 and CD8 are mutually exclusive, so anti-CD8,

generally used in conjunction with anti-CD4. It is a useful marker for distinguishing helper/inducer T-lymphocytes, and most peripheral T-cell lymphomas are CD4+/CD8-. Anaplastic large cell lymphoma is usually CD4+ and CD8-, and in T-lymphoblastic lymphoma/leukemia, CD4 and CD8 are often co-expressed. CD8 is also found in littoral cell angioma of the spleen.

Application Notes

Optimal dilution of the CD8a antibody should be determined by the researcher.

Immunogen

Human recombinant protein was used as the immunogen for this CD8a antibody.

Storage

Store the CD8a antibody at 2-8oC, protected from light.