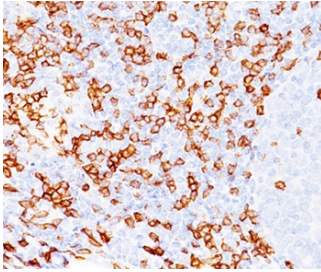


CD8A Antibody for IF / CD8A Immunofluorescence Antibody [clone C8/468] (V2043)

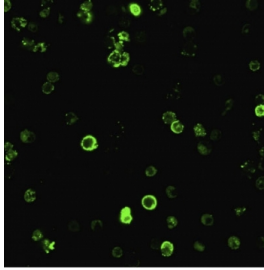
Catalog No.	Formulation	Size
V2043-100UG	0.2 mg/ml in 1X PBS with 0.1 mg/ml BSA (US sourced) and 0.05% sodium azide	100 ug
V2043-20UG	0.2 mg/ml in 1X PBS with 0.1 mg/ml BSA (US sourced) and 0.05% sodium azide	20 ug
V2043SAF-100UG	1 mg/ml in 1X PBS; BSA free, sodium azide free	100 ug
V2043IHC-7ML	Prediluted in 1X PBS with 0.1 mg/ml BSA (US sourced) and 0.05% sodium azide; *For IHC use only*	7 ml

Bulk quote request

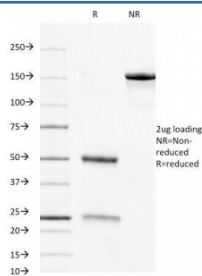
Species Reactivity	Human
Format	Purified
Host	Mouse
Clonality	Monoclonal (mouse origin)
Isotype	Mouse IgG1, kappa
Clone Name	C8/468
Purity	Protein G affinity chromatography
Buffer	1X PBS, pH 7.4
UniProt	P01732
Gene ID	925
Localization	Cell surface
Applications	Immunohistochemistry (FFPE) : 1-2ug/ml for 30 min at RT Immunofluorescence : 1-2ug/ml
Limitations	This CD8a antibody is available for research use only.



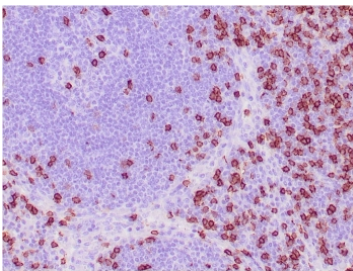
CD8a Antibody IHC. Immunohistochemistry testing of FFPE human tonsil tissue stained with CD8a antibody (clone C8/468). Note cell surface staining.



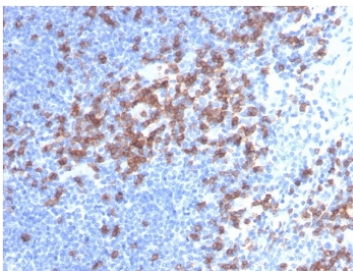
CD8a Antibody for IF. Immunofluorescence analysis of CD8 alpha (CD8A) in human PBMC showing strong membrane-associated green fluorescence in cytotoxic T lymphocytes, consistent with cell surface localization and enabling visualization of CD8-positive immune cell populations within heterogeneous peripheral blood mononuclear cell samples (clone C8/468).



SDS-PAGE analysis of purified, BSA-free CD8a antibody (clone C8/468) as confirmation of integrity and purity.



CD8a Antibody Tonsil IHC. Immunohistochemistry staining of FFPE human tonsil tissue with CD8a antibody (clone C8/468). HIER: boil tissue sections in pH 9 10mM Tris with 1mM EDTA for 20 min and allow to cool before testing.



CD8a Antibody Lymph Node IHC. Immunohistochemistry staining of FFPE human lymph node tissue with CD8a antibody (clone C8/468). HIER: boil tissue sections in pH 9 10mM Tris with 1mM EDTA for 20 min and allow to cool before testing.

Description

CD8 alpha (CD8A) is a transmembrane glycoprotein expressed on cytotoxic T lymphocytes where it functions as a co-receptor for T cell receptor signaling through interaction with MHC class I molecules. CD8A Antibody for IF is widely used to visualize cytotoxic T cells with high spatial resolution, enabling detailed mapping of immune cell localization within tissues and cellular systems. CD8A antibody, also referred to as CD8 alpha antibody or CD8 antigen antibody, is a foundational immunofluorescence marker for identifying cytotoxic T lymphocytes and studying immune architecture.

CD8A is localized to the plasma membrane of cytotoxic T cells, where it forms heterodimers with CD8B or homodimers in specific immune subsets. In immunofluorescence applications, CD8A staining produces clear membrane-associated

signal outlining individual lymphocytes, allowing precise visualization of cell morphology and spatial relationships. This enables CD8A immunofluorescence antibody detection to distinguish infiltrating T cells from epithelial, stromal, and tumor compartments in complex tissue environments.

CD8A Antibody for IF is particularly valuable in spatial biology and immuno-oncology studies, where the positioning of cytotoxic T cells relative to tumor cells, vasculature, and stromal structures provides critical biological insight. Immunofluorescence detection allows detailed analysis of immune infiltration patterns, including localization within tumor nests, invasive margins, and peritumoral regions. These spatial relationships are essential for understanding immune activation, immune exclusion, and therapeutic response mechanisms.

This mouse monoclonal antibody, clone C8/468, is provided in an unlabeled format, allowing detection through fluorophore-conjugated secondary antibodies. The unlabeled CD8A antibody format provides maximum flexibility for experimental design, enabling researchers to select fluorophores based on available imaging channels and multiplex panel requirements. This makes it especially well suited for multi-marker immunofluorescence workflows where CD8A staining is combined with markers such as CD3 antibody, CD4 antibody, or checkpoint proteins including PD-1 and PD-L1.

The use of an unlabeled CD8A immunofluorescence antibody also allows signal amplification through secondary antibody binding, which can enhance detection sensitivity in samples with low antigen abundance. This feature is particularly useful in studies where CD8-positive lymphocytes are present at low density or in heterogeneous tissue environments. Additionally, the ability to swap secondary antibodies enables adaptation across different imaging platforms, including confocal microscopy and high-content imaging systems.

CD8A immunofluorescence antibody staining using an unlabeled format supports advanced co-localization studies and multiplex IF panel development, where precise control over fluorophore selection is critical. This flexibility makes CD8A Antibody for IF an essential reagent for high-resolution immune mapping, enabling detailed investigation of cytotoxic T cell distribution, immune cell interactions, and microenvironment organization in both normal and disease contexts.

This antibody is part of a broader selection of immune cell marker antibodies designed to support studies of T cell biology, immune infiltration, and tumor immunology, including application-specific [CD8A antibody](#) reagents for IHC, FACS, WB, and IF.

Application Notes

The concentration stated for each application is a general starting point. Variations in protocols, secondaries and substrates may require the CD8A Antibody for IF / CD8A Immunofluorescence Antibody to be titrated up or down for optimal performance.

- >1. Staining of formalin-fixed tissues requires boiling tissue sections in pH 9 10mM Tris with 1mM EDTA for 10-20 min followed by cooling at RT for 20 minutes.
2. The prediluted format is supplied in a dropper bottle and is optimized for use in IHC. After epitope retrieval step (if required), drip mAb solution onto the tissue section and incubate at RT for 30 min.

Immunogen

Human recombinant protein was used as the immunogen for this CD8A Antibody for IF / CD8A Immunofluorescence Antibody.

Storage

Store the CD8a antibody at 2-8oC (with azide) or aliquot and store at -20oC or colder (without azide).

Alternate Names

CD8A IF antibody, CD8 alpha immunofluorescence antibody, CD8A fluorescent staining antibody, CD8 cytotoxic T cell IF

antibody, CD8A intracellular localization antibody

References (1)