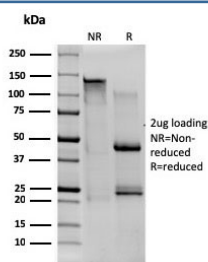


CD80 Antibody / B7-1 [clone C80/1608] (V3297)

Catalog No.	Formulation	Size
V3297-100UG	0.2 mg/ml in 1X PBS with 0.1 mg/ml BSA (US sourced) and 0.05% sodium azide	100 ug
V3297-20UG	0.2 mg/ml in 1X PBS with 0.1 mg/ml BSA (US sourced) and 0.05% sodium azide	20 ug
V3297SAF-100UG	1 mg/ml in 1X PBS; BSA free, sodium azide free	100 ug

Bulk quote request

Availability	1-3 business days
Species Reactivity	Human
Format	Purified
Clonality	Monoclonal (mouse origin)
Isotype	Mouse IgG1, kappa
Clone Name	C80/1608
Purity	Protein G affinity chromatography
UniProt	P33681
Localization	Cytoplasmic, membranous
Applications	ELISA (order BSA/sodium Azide-free Format For Coating) :
Limitations	This CD80 antibody is available for research use only.



SDS-PAGE analysis of purified, BSA-free CD80 antibody (clone C80/1608) as confirmation of integrity and purity.

Description

T cell proliferation and lymphokine production are triggered by occupation of the TCR by antigen, followed by a costimulatory signal that is delivered by a ligand expressed on antigen presenting cells. The B7-related cell surface

proteins CD80 (B7-1) and CD86 (B7-2) are expressed on antigen presenting cells bind the homologous T cell receptors CTLA-4 (cytotoxic T lymphocyte-associated protein-4) and CD28 and trigger costimulatory signals for optimal T cell activation. CTLA-4 shares 31% overall amino acid identity with CD28 and it has been proposed that CD28 and CTLA-4 are functionally redundant. SLAM is a novel receptor on T cells that, when engaged, potentiates T cell expansion in a CD28-independent manner. B7, also designated BB1, is another ligand or counter receptor for CD28 and CTLA-4 that is expressed on the antigen-presenting cell.

Application Notes

Optimal dilution of the CD80 antibody should be determined by the researcher.

Immunogen

Recombinant human protein used as the immunogen for the CD80 antibody.

Storage

Store the CD80 antibody at 2-8oC (with azide) or aliquot and store at -20oC or colder (without azide).