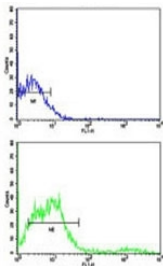


CD8 Antibody (F43566)

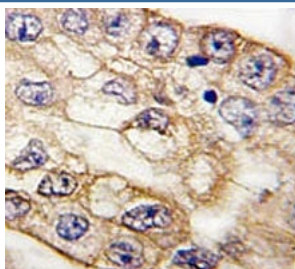
Catalog No.	Formulation	Size
F43566-0.4ML	In 1X PBS, pH 7.4, with 0.09% sodium azide	0.4 ml
F43566-0.08ML	In 1X PBS, pH 7.4, with 0.09% sodium azide	0.08 ml

[Bulk quote request](#)

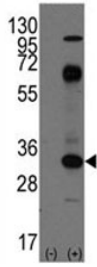
Availability	1-3 business days
Species Reactivity	Human
Format	Antigen affinity purified
Host	Rabbit
Clonality	Polyclonal (rabbit origin)
Isotype	Rabbit Ig
Purity	Antigen affinity
UniProt	P01732
Applications	Western Blot : 1:1000 IHC (Paraffin) : 1:10-1:50 Flow Cytometry : 1:10-1:50
Limitations	This CD8 antibody is available for research use only.



Flow cytometric analysis of NCI-H292 cells using CD8 antibody (bottom histogram) compared to a negative control (top histogram). FITC-conjugated goat-anti-rabbit secondary Ab was used for the analysis.



IHC analysis of FFPE human lung carcinoma tissue stained with CD8A antibody



Western blot analysis of CD8 antibody and 293 cell lysate (2 ug/lane) either nontransfected (Lane 1) or transiently transfected with the CD8A gene (2).

Description

The CD8 antigen is a cell surface glycoprotein found on most cytotoxic T lymphocytes that mediates efficient cell-cell interactions within the immune system. The CD8 antigen, acting as a co-receptor, and the T-cell receptor on the T lymphocyte recognize antigen displayed by an antigen presenting cell (APC) in the context of class I MHC molecules. The functional co-receptor is either a homodimer composed of two alpha chains, or a heterodimer composed of one alpha and one beta chain. Both alpha and beta chains share significant homology to immunoglobulin variable light chains.

Application Notes

Titration of the CD8 antibody may be required due to differences in protocols and secondary/substrate sensitivity.

Immunogen

A portion of amino acids 150-180 from the human protein was used as the immunogen for this CD8 antibody.

Storage

Aliquot the CD8 antibody and store frozen at -20oC or colder. Avoid repeated freeze-thaw cycles.