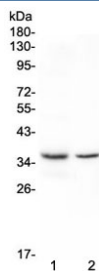


CD8A Antibody for WB / Mouse Rat Tissue Antibody (RQ4104)

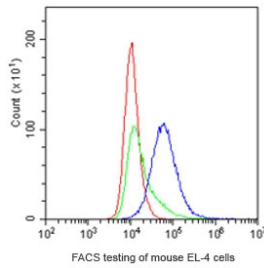
Catalog No.	Formulation	Size
RQ4104	0.5mg/ml if reconstituted with 0.2ml sterile DI water	100 ug

[Bulk quote request](#)

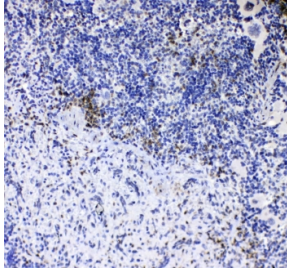
Availability	1-3 business days
Species Reactivity	Mouse, Rat
Format	Antigen affinity purified
Host	Rabbit
Clonality	Polyclonal (rabbit origin)
Isotype	Rabbit IgG
Purity	Antigen affinity purified
Buffer	Lyophilized from 1X PBS with 2% Trehalose and 0.025% sodium azide
UniProt	P01731
Localization	Cytoplasmic, membrane, secreted
Applications	Western Blot : 0.5-1ug/ml IHC (FFPE) : 1-2ug/ml Flow Cytometry : 1-3ug/10 ⁶ cells Direct ELISA : 0.1-0.5ug/ml
Limitations	This CD8A Antibody for WB / Mouse Rat Tissue Antibody is available for research use only.



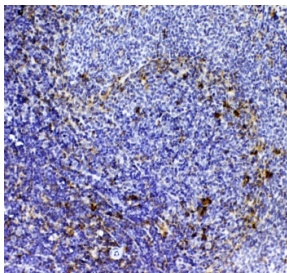
CD8A Antibody for WB - Mouse and Rat Tissue. Western blot analysis of CD8 alpha (CD8A) in 1) rat spleen and 2) rat thymus lysates shows bands at approximately 26-40 kDa, consistent with the predicted molecular weight and glycosylation-dependent migration of this membrane glycoprotein. The signal reflects endogenous CD8A expression in lymphoid tissues enriched for cytotoxic T lymphocytes, supporting use in western blot analysis of rodent immune system samples.



FACS testing of mouse EL-4 cells with Cd8a antibody at 1ug/10⁶ cells; blue=Cd8a antibody, green=isotype control, red=cells alone.



IHC testing of FFPE mouse spleen tissue with Cd8a antibody at 1ug/ml. Required HIER: steam section in pH6 citrate buffer for 20 min and allow to cool prior to testing.



IHC testing of FFPE rat spleen tissue with Cd8a antibody at 1ug/ml. Required HIER: steam section in pH6 citrate buffer for 20 min and allow to cool prior to testing.

Description

CD8 alpha (CD8A) is a transmembrane glycoprotein expressed on cytotoxic T lymphocytes and plays a central role in T cell receptor-mediated immune responses through interaction with MHC class I molecules. CD8A Antibody for WB is widely used to detect CD8 alpha protein expression in rodent tissues, supporting western blot analysis of immune cell populations in mouse and rat models. CD8A antibody, also referred to as CD8 alpha antibody or CD8 antigen antibody, is an essential marker for studying cytotoxic T cell biology in preclinical systems.

CD8A is localized to the plasma membrane and is subject to post-translational modifications such as glycosylation, which can influence migration behavior during SDS-PAGE. In western blot applications, CD8A detection may show variation in band appearance depending on tissue source, protein processing, and sample preparation. As a membrane-associated glycoprotein, CD8A requires effective lysis conditions to ensure consistent detection, particularly in tissue-derived samples.

This rabbit polyclonal antibody is optimized for detection of CD8A in mouse and rat samples and demonstrates strong performance in spleen and thymus lysates, both of which are enriched in T lymphocyte populations. Validation in these tissues provides biologically relevant confirmation of CD8A expression in rodent immune systems, supporting its use in studies of T cell development, maturation, and immune function.

CD8A Antibody for WB is particularly valuable in preclinical research where rodent models are used to investigate immune responses, disease progression, and therapeutic interventions. Detection of CD8A in spleen and thymus allows researchers to confirm the presence and relative abundance of cytotoxic T cells, supporting studies of lymphoid tissue biology and immune regulation.

Western blot analysis of CD8A in rodent systems is commonly used to evaluate experimental models, monitor immune cell population changes, and validate findings from in vivo studies. CD8A antibody provides a reliable method for detecting cytotoxic T cell-associated proteins in these systems, supporting a wide range of applications including

immunology, oncology, and translational research involving mouse and rat models.

This antibody is part of a broader selection of immune cell marker antibodies designed to support studies of T cell biology, immune infiltration, and tumor immunology, including application-specific [CD8A antibody](#) reagents for IHC, FACS, WB, and IF.

Application Notes

Optimal dilution of the CD8A Antibody for WB / Mouse Rat Tissue Antibody should be determined by the researcher.

Immunogen

A recombinant mouse partial protein corresponding to amino acids K28-Y196 was used as the immunogen for the Cd8 alpha antibody.

Storage

After reconstitution, the Cd8 alpha antibody can be stored for up to one month at 4oC. For long-term, aliquot and store at -20oC. Avoid repeated freezing and thawing.

Alternate Names

CD8A WB antibody mouse rat, CD8 alpha rodent antibody, CD8A spleen thymus antibody, CD8A polyclonal antibody, CD8A rodent WB antibody