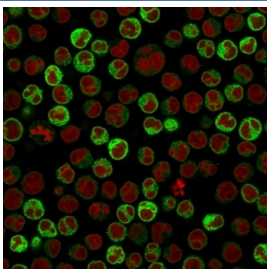


CD79a Antibody [clone ZL7-4] (V8264)

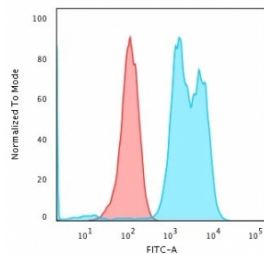
Catalog No.	Formulation	Size
V8264-100UG	0.2 mg/ml in 1X PBS with 0.1 mg/ml BSA (US sourced) and 0.05% sodium azide	100 ug
V8264-20UG	0.2 mg/ml in 1X PBS with 0.1 mg/ml BSA (US sourced) and 0.05% sodium azide	20 ug
V8264SAF-100UG	1 mg/ml in 1X PBS; BSA free, sodium azide free	100 ug

Bulk quote request

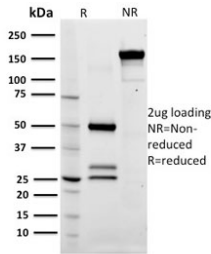
Availability	1-3 business days
Species Reactivity	Human
Format	Purified
Host	Mouse
Clonality	Monoclonal (mouse origin)
Isotype	Mouse IgG1, kappa
Clone Name	ZL7-4
Purity	Protein G affinity chromatography
UniProt	P11912
Localization	Cell surface, cytoplasmic
Applications	Flow Cytometry : 1-2ug/10 ⁶ cells in 0.1ml Immunofluorescence : 1-2ug/ml Immunohistochemistry (FFPE) : 1-2ug/ml
Limitations	This CD79a antibody is available for research use only.



Immunofluorescent staining of PFA-fixed human Raji cells with CD79a antibody (clone ZL7-4, green) and Reddot nuclear stain (red).



Flow cytometry testing of human Raji cells with CD79a antibody (clone ZL7-4); Red=isotype control, Blue= CD79a antibody.



SDS-PAGE analysis of purified, BSA-free CD79a antibody (clone ZL7-4) as confirmation of integrity and purity.

Description

A disulphide-linked heterodimer, consisting of mb-1 (or CD79a) and B29 (or CD79b) polypeptides, is non-covalently associated with membrane-bound immunoglobulins on B cells. This complex of mb-1 and B29 polypeptides and immunoglobulin constitute the B cell Ag receptor. CD79a first appears at pre B cell stage, early in maturation, and persists until the plasma cell stage where it is found as an intracellular component. CD79a is found in the majority of acute leukemias of precursor B cell type, in B cell lines, B cell lymphomas, and in some myelomas. It is not present in myeloid or T cell lines. Anti-CD79a is generally used to complement anti-CD20 especially for mature B-cell lymphomas after treatment with Rituximab (anti-CD20). This antibody will stain many of the same lymphomas as anti-CD20, but also is more likely to stain B-lymphoblastic lymphoma/leukemia than is anti-CD20. Anti-CD79a also stains more cases of plasma cell myeloma and occasionally some types of endothelial cells as well.

Application Notes

Optimal dilution of the CD79a antibody should be determined by the researcher.

Immunogen

IgM complex isolated from Daudi cells was used as the immunogen for this CD79a antibody.

Storage

Store the CD79a antibody at 2-8oC (with azide) or aliquot and store at -20oC or colder (without azide).