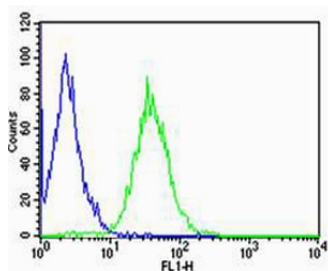


CD74 Antibody [clone 1267CT820.116.140.154] (F52443)

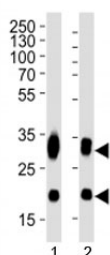
| Catalog No. | Formulation | Size |
|---------------|--|---------|
| F52443-0.4ML | In 1X PBS, pH 7.4, with 0.09% sodium azide | 0.4 ml |
| F52443-0.08ML | In 1X PBS, pH 7.4, with 0.09% sodium azide | 0.08 ml |

[Bulk quote request](#)

| | |
|---------------------------|--|
| Availability | 1-3 business days |
| Species Reactivity | Human |
| Format | Purified |
| Clonality | Monoclonal (mouse origin) |
| Isotype | Mouse IgG2b, k |
| Clone Name | 1267CT820.116.140.154 |
| Purity | Purified |
| UniProt | P04233 |
| Applications | Flow Cytometry : 1:25 Western Blot : 1:1000 |
| Limitations | This CD74 antibody is available for research use only. |



Flow cytometric analysis of Raji cells using CD74 antibody (green) and an isotype control of mouse IgG2b (blue); Ab was diluted at 1:25 dilution.



Western blot analysis of lysate from 1) Daudi and 2) Raji cell line using CD74 antibody at 1:1000.

Description

Plays a critical role in MHC class II antigen processing by stabilizing peptide-free class II alpha/beta heterodimers in a complex soon after their synthesis and directing transport of the complex from the endoplasmic reticulum to the endosomal/lysosomal system where the antigen processing and binding of antigenic peptides to MHC class II takes place. Serves as cell surface receptor for the cytokine MIF.

Application Notes

Titration of the CD74 antibody may be required due to differences in protocols and secondary/substrate sensitivity.

Immunogen

This CD74 antibody was produced from a mouse immunized with a KLH conjugated synthetic peptide between 1-232 amino acids from human protein.

Storage

Aliquot the CD74 antibody and store frozen at -20oC or colder. Avoid repeated freeze-thaw cycles.