

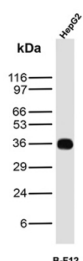
## CD7 Antibody [clone B-F12] (V2962)

Catalog No.	Formulation	Size
V2962-100UG	0.2 mg/ml in 1X PBS with 0.1 mg/ml BSA (US sourced) and 0.05% sodium azide	100 ug
V2962-20UG	0.2 mg/ml in 1X PBS with 0.1 mg/ml BSA (US sourced) and 0.05% sodium azide	20 ug
V2962SAF-100UG	1 mg/ml in 1X PBS; BSA free, sodium azide free	100 ug

 Citations (3)

[Bulk quote request](#)

<b>Availability</b>	1-3 business days
<b>Species Reactivity</b>	Human
<b>Format</b>	Purified
<b>Host</b>	Mouse
<b>Clonality</b>	Monoclonal (mouse origin)
<b>Isotype</b>	Mouse IgG2a, kappa
<b>Clone Name</b>	B-F12
<b>Purity</b>	Protein G affinity chromatography
<b>UniProt</b>	P09564
<b>Localization</b>	Cell surface
<b>Applications</b>	Flow Cytometry : 0.5-1ug/10 <sup>6</sup> cells Immunofluorescence : 0.5-1ug/ml Western Blot : 2-4ug/ml
<b>Limitations</b>	This CD7 antibody is available for research use only.



CD7 Antibody HepG2 WB. Western blot analysis of human HepG2 cell lysate using CD7 antibody detecting CD7, clone B-F12. A band is observed at approximately 35-40 kDa, consistent with the expected molecular weight of CD7, a transmembrane glycoprotein typically expressed on T lymphocytes and natural killer cells. Detection in HepG2 cells may reflect low-level or context-dependent expression or background signal.

## Description

CD7 is found on thymocytes and mature T cells. It plays an essential role in T-cell interactions and also in T-/B-cell interaction during early lymphoid development. [Wiki]

## Application Notes

Optimal dilution of the CD7 antibody should be determined by the researcher.

## Immunogen

Chronic Lymphoid Leukemia (CLL) cells were used as the immunogen for the CD7 antibody.

## Storage

Store the CD7 antibody at 2-8oC (with azide) or aliquot and store at -20oC or colder (without azide).