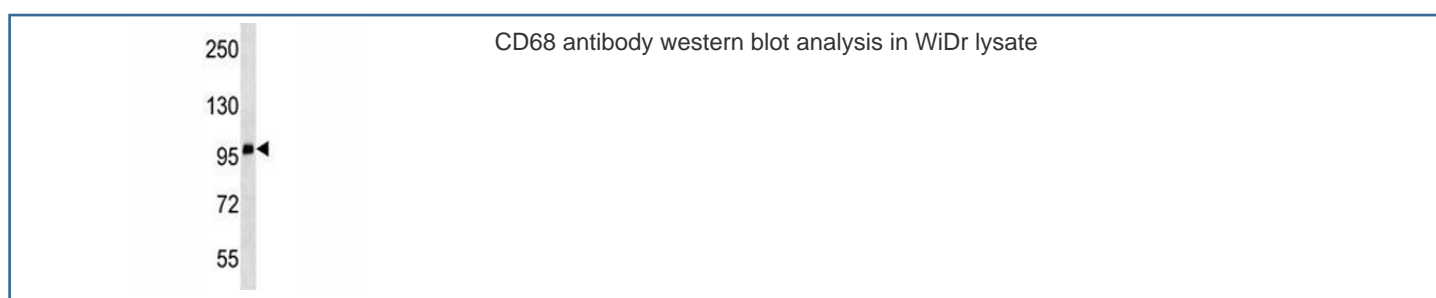


CD68 Antibody [clone 404CT9.2.5] (F53604)

Catalog No.	Formulation	Size
F53604-0.1ML	In ascites with 0.09% sodium azide	0.1 ml

Bulk quote request

Availability	1-3 business days
Species Reactivity	Human
Format	Ascites
Clonality	Monoclonal (mouse origin)
Isotype	Mouse IgG1
Clone Name	404CT9.2.5
Purity	Ascites
UniProt	P34810
Applications	Western Blot : 1:1000-1:4000
Limitations	This CD68 antibody is available for research use only.



Description

This gene encodes a 40~110-kD transmembrane glycoprotein that is highly expressed by human monocytes and tissue macrophages. It is a member of the lysosomal/endosomal-associated membrane glycoprotein (LAMP) family. The protein primarily localizes to lysosomes and endosomes with a smaller fraction circulating to the cell surface. It is a type I integral membrane protein with a heavily glycosylated extracellular domain and binds to tissue- and organ-specific lectins or selectins. The protein is also a member of the scavenger receptor family. Scavenger receptors typically function to clear cellular debris, promote phagocytosis, and mediate the recruitment and activation of macrophages. Alternative splicing results in multiple transcripts encoding different isoforms.

Application Notes

Titration of the CD68 antibody may be required due to differences in protocols and secondary/substrate sensitivity.

Immunogen

A portion of amino acids 133-160 from the human protein was used as the immunogen for this CD68 antibody.

Storage

Aliquot the CD68 antibody and store frozen at -20oC or colder. Avoid repeated freeze-thaw cycles.