

CD63 Antibody PE Conjugate [clone NKI/C3] (V2070PE)

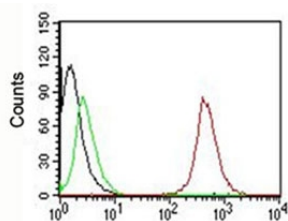
Catalog No.	Formulation	Size
V2070PE-100T	500 ul at 0.1 mg/ml with 0.1 mg/ml BSA (US sourced), 0.05% sodium azide	100 Tests



Citations (8)

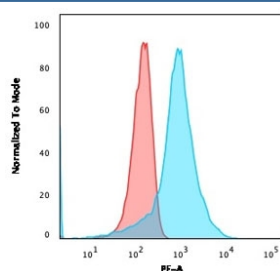
[Bulk quote request](#)

Availability	1-3 business days
Species Reactivity	Human and Mouse. Other species not known.
Format	PE Conjugate
Clonality	Monoclonal (mouse origin)
Isotype	Mouse IgG1, kappa
Clone Name	NKI/C3
Purity	Protein G purified antibody
Gene ID	967
Localization	Cytoplasmic
Applications	Flow Cytometry : 5ul/test/million cells or 5ul/test/100ul of whole blood Immunofluorescence : 1:50-1:100 for 30 minutes at RT
Limitations	This CD63 antibody is available for research use only.



FACS testing of human MCF7 cells

FACS testing of MCF-7 cells with PE conjugated CD63 antibody: Black=cells alone; Green=isotype control; Red=CD63 antibody



Flow cytometry testing of human U-87 MG cells with CD63 antibody (clone NKI/C3); Red=isotype control, Blue= CD63 antibody.

Description

The tetraspanins are integral membrane proteins expressed on cell surface and granular membranes of hematopoietic cells and are components of multi-molecular complexes with specific integrins. The tetraspanin CD63 is a lysosomal membrane glycoprotein that translocates to the plasma membrane after platelet activation. CD63 is expressed on activated platelets, monocytes and macrophages, and is weakly expressed on granulocytes, T cell and B cells. It is located on the basophilic granule membranes and on the plasma membranes of lymphocytes and granulocytes. CD63 is a member of the TM4 superfamily of leukocyte glycoproteins that includes CD9, CD37 and CD53, which contain four transmembrane regions. CD63 may play a role in phagocytic and intracellular lysosome-phagosome fusion events. CD63 deficiency is associated with Hermansky-Pudlak syndrome and is strongly expressed during the early stages of melanoma progression.

Application Notes

The concentration stated for each application is a general starting point. Variations in protocols, secondaries and substrates may require the antibody to be titrated up or down for optimal performance.

Immunogen

The smooth plasma membrane fraction of MeWo cells was used as the immunogen for this CD63 antibody.

Storage

Store the CD63 antibody at 2-8C. Conjugate is light sensitive, store in the dark.

Alternate Names

gp55; granulophysin; Lysosomal-associated membrane protein 3 (LAMP-3); Mast cell antigen AD1; melanoma 1 antigen; Melanoma-associated antigen MLA1; Melanoma-associated antigen ME491; MLA1; NGA; Ocular melanoma-associated antigen; OMA81H; PTLGP40; Tetraspanin-30; TSPAN30, CD63 antibody

References (3)