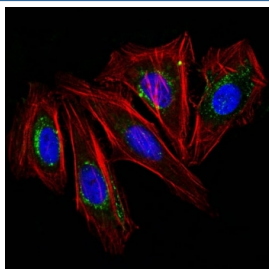


CD63 Antibody / LAMP-3 [clone NKI/C3] (V2070CF488)

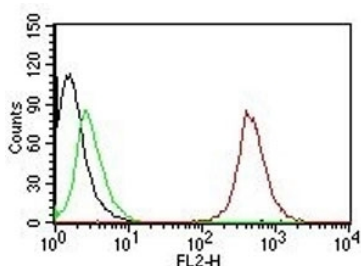
Catalog No.	Formulation	Size
V2070CF488-100T	500 ul at 0.1 mg/ml with 0.1 mg/ml BSA (US sourced), 0.05% sodium azide	100 Tests

Bulk quote request

Availability	1-3 business days
Species Reactivity	Human, Mouse
Format	CF488 Conjugate
Clonality	Monoclonal (mouse origin)
Isotype	Mouse IgG1, kappa
Clone Name	NKI/C3
Purity	Protein G affinity chromatography
UniProt	P08962
Localization	Cytoplasmic
Applications	Flow Cytometry : 5ul per test per one 10 ⁶ cells in 0.1ml or 5ul per 100ul of whole blood Immunofluorescence : 1:50-1:100
Limitations	This CD63 antibody is available for research use only.



Immunofluorescence testing of human HeLa cells with CD63 antibody (green, clone NKI/C3). F-actin filaments are labeled with Dylight 554 phalloidin (red); nuclei stained with DAPI (blue).



FACS testing of permeabilized human MCF7 cells with CD63 antibody (clone NKI/C3): Black=cells alone; Green=isotype control; Red= CD63 antibody.

Description

This MAb recognizes protein of 26kDa-60kDa, which is identified as CD63. Its epitope is different from that of MAb LAMP3/529. The tetraspanins are integral membrane proteins expressed on cell surface and granular membranes of hematopoietic cells and are components of multi-molecular complexes with specific integrins. The tetraspanin CD63 is a lysosomal membrane glycoprotein that translocates to the plasma membrane after platelet activation. CD63 is expressed on activated platelets, monocytes and macrophages, and is weakly expressed on granulocytes, T cell and B cells. It is located on the basophilic granule membranes and on the plasma membranes of lymphocytes and granulocytes. CD63 is a member of the TM4 superfamily of leukocyte glycoproteins that includes CD9, CD37 and CD53, which contain four transmembrane regions. CD63 may play a role in phagocytic and intracellular lysosome-phagosome fusion events. CD63 deficiency is associated with Hermansky-Pudlak syndrome and is strongly expressed during the early stages of melanoma progression.

Application Notes

Optimal dilution of the CD63 antibody should be determined by the researcher.

Immunogen

The smooth plasma membrane fraction of MeWo cells was used as the immunogen for this CD63 antibody.

Storage

Store the CD63 antibody at 2-8°C, protected from light.