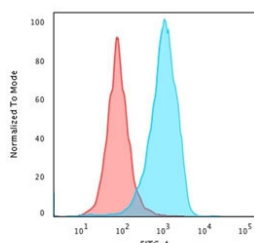


CD63 Antibody / LAMP-3 [clone CDLA63-1] (V7190)

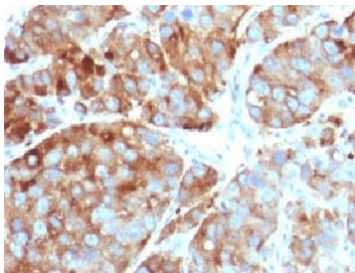
Catalog No.	Formulation	Size
V7190-100UG	0.2 mg/ml in 1X PBS with 0.1 mg/ml BSA (US sourced) and 0.05% sodium azide	100 ug
V7190-20UG	0.2 mg/ml in 1X PBS with 0.1 mg/ml BSA (US sourced) and 0.05% sodium azide	20 ug
V7190SAF-100UG	1 mg/ml in 1X PBS; BSA free, sodium azide free	100 ug
V7190IHC-7ML	Prediluted in 1X PBS with 0.1 mg/ml BSA (US sourced) and 0.05% sodium azide; *For IHC use only*	7 ml

[Bulk quote request](#)

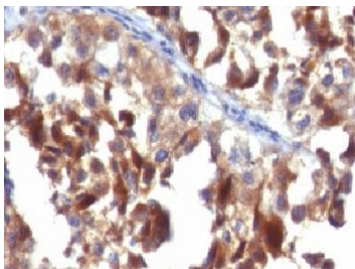
Availability	1-3 business days
Species Reactivity	Human
Format	Purified
Host	Mouse
Clonality	Monoclonal (mouse origin)
Isotype	Mouse IgG2a, kappa
Clone Name	CDLA63-1
Purity	Protein G affinity chromatography
UniProt	P08962
Localization	Cytoplasmic
Applications	Flow Cytometry : 0.5-1ug/million cells in 0.1ml Immunohistochemistry (FFPE) : 1-2ug/ml for 30 min at RT (1) Prediluted IHC Only Format : incubate for 30 min at RT (2)
Limitations	This CD63 antibody is available for research use only.



Flow cytometry testing of PFA-fixed human U-87 MG cells with CD63 antibody (clone CDLA63-1); Red=isotype control, Blue= CD63 antibody.



IHC testing of FFPE human prostate carcinoma with CD63 antibody (clone CDLA63-1).
HIER: FFPE testing requires sections to be boiled in pH6 10mM citrate buffer for 10-20 minutes, followed by cooling at RT for 20 minutes, prior to staining.



IHC testing of FFPE human melanoma with CD63 antibody (clone CDLA63-1). HIER:
FFPE testing requires sections to be boiled in pH6 10mM citrate buffer for 10-20 minutes, followed by cooling at RT for 20 minutes, prior to staining.

Description

CD63 functions as cell surface receptor for TIMP1 and plays a role in the activation of cellular signaling cascades. Plays a role in the activation of ITGB1 and integrin signaling, leading to the activation of AKT, FAK/PTK2 and MAP kinases. Promotes cell survival, reorganization of the actin cytoskeleton, cell adhesion, spreading and migration, via its role in the activation of AKT and FAK/PTK2. Plays a role in VEGFA signaling via its role in regulating the internalization of KDR/VEGFR2. Plays a role in intracellular vesicular transport processes, and is required for normal trafficking of the PMEL luminal domain that is essential for the development and maturation of melanocytes. Plays a role in the adhesion of leukocytes onto endothelial cells via its role in the regulation of SELP trafficking. May play a role in mast cell degranulation in response to Ms4a2/FcεRI stimulation, but not in mast cell degranulation in response to other stimuli. [UniProt]

Application Notes

Titering of the CD63 antibody may be required for optimal performance.

- 1.
2. The prediluted format is supplied in a dropper bottle and is optimized for use in IHC. After epitope retrieval step (if required), drip mAb solution onto the tissue section and incubate at RT for 30 min.

Immunogen

Recombinant human full-length protein was used as the immunogen for the CD63 antibody.

Storage

Store the CD63 antibody at 2-8°C (with azide) or aliquot and store at -20°C or colder (without azide).

