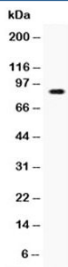


CD62L Antibody (R32855)

Catalog No.	Formulation	Size
R32855	0.5mg/ml if reconstituted with 0.2ml sterile DI water	100 ug

[Bulk quote request](#)

Availability	1-3 business days
Species Reactivity	Human
Format	Antigen affinity purified
Host	Rabbit
Clonality	Polyclonal (rabbit origin)
Isotype	Rabbit IgG
Purity	Antigen affinity
Buffer	Lyophilized from 1X PBS with 2.5% BSA and 0.025% sodium azide
UniProt	P14151
Applications	Western Blot : 0.5-1ug/ml ELISA (recombinant Human Protein) : 0.1-0.5ug/ml (BSA-free format available)
Limitations	This CD62L antibody is available for research use only.



Western blot testing of recombinant human protein with CD62L antibody at 0.5ug/ml.
Expected molecular weight: 42~95 kDa depending on level of glycosylation.

Description

CD62L, also known as L-selectin, is a cell adhesion molecule found on leukocytes. It belongs to the selectin family of proteins, which recognize sialylated carbohydrate groups. It is cleaved by ADAM17. SELL (L-selectin) is a cell surface component that is a member of a family of adhesion/homing receptors which play important roles in leukocyte-endothelial cell interactions. The molecule is composed of multiple domains: one homologous to lectins, one to epidermal growth factor, and two to the consensus repeat units found in C3/C4 binding proteins. L-selectin acts as a homing receptor for leukocytes to enter secondary lymphoid tissues via high endothelial venules. Ligands present on endothelial cells will bind

to leukocyte expressing L-selectin, slowing leukocyte trafficking through the blood, and facilitating entry into a secondary lymphoid organ at that point.

Application Notes

Optimal dilution of the CD62L antibody should be determined by the researcher.

Immunogen

A recombinant human protein corresponding to amino acids W39-K151 was used as the immunogen for the CD62L antibody.

Storage

After reconstitution, the CD62L antibody can be stored for up to one month at 4°C. For long-term, aliquot and store at -20°C. Avoid repeated freezing and thawing.