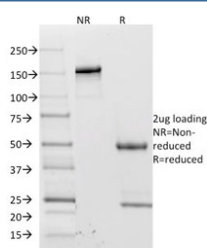


CD62L Antibody / L-Selectin [clone CD62L/1588] (V8075)

Catalog No.	Formulation	Size
V8075-100UG	0.2 mg/ml in 1X PBS with 0.1 mg/ml BSA (US sourced) and 0.05% sodium azide	100 ug
V8075-20UG	0.2 mg/ml in 1X PBS with 0.1 mg/ml BSA (US sourced) and 0.05% sodium azide	20 ug
V8075SAF-100UG	1 mg/ml in 1X PBS; BSA free, sodium azide free	100 ug

[Bulk quote request](#)

Availability	1-3 business days
Species Reactivity	Human
Format	Purified
Clonality	Monoclonal (mouse origin)
Isotype	Mouse IgG1, kappa
Clone Name	CD62L/1588
Purity	Protein G affinity chromatography
UniProt	P14151
Applications	ELISA (order BSA-free Format For Coating) :
Limitations	This CD62L antibody is available for research use only.



SDS-PAGE analysis of purified, BSA-free L-Selectin antibody (clone CD62L/1588) as confirmation of integrity and purity.

Description

Selectins, also designated CD62 antigens, comprise a family of carbohydrate-binding proteins involved in mediating cellular interactions with leukocytes. L-Selectin (also designated LECAM-1 or CD62L) is expressed on the majority of B and naive T cells and on most monocytes, neutrophils and eosinophils. L-Selectin interacts with specific carbohydrates

expressed by activated endothelial cells. P-Selectin (also designated GMP-140 or CD62P), expressed on activated platelets and endothelial cells, and E-Selectin (also designated ELMA-1 or CD62E), expressed on endothelial cells, exhibit overlapping ligand specificities. Both recognize sialyl-Le (x) as a ligand and bind to specific carbohydrates on neutrophils and monocytes.

Application Notes

Optimal dilution of the CD62L antibody should be determined by the researcher.

Immunogen

Supernatant from phorbol myristic acid activated human peripheral blood leukocytes was used as the immunogen for the L-Selectin antibody.

Storage

Store the CD62L antibody at 2-8oC (with azide) or aliquot and store at -20oC or colder (without azide).