

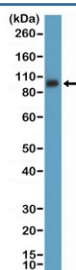
CD61 Antibody / ITGB3 [clone RM382] (R20400)

Catalog No.	Formulation	Size
R20400-0.1ML	Antibody in PBS with 50% glycerol, 1% BSA and 0.09% sodium azide	100 ul

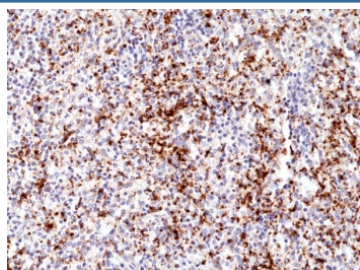
Recombinant **RABBIT MONOCLONAL**

[Bulk quote request](#)

Availability	1-3 business days
Species Reactivity	Human, Mouse, Rat
Format	Purified
Host	Rabbit
Clonality	Recombinant Rabbit Monoclonal
Isotype	Rabbit IgG
Clone Name	RM382
Purity	Protein A purified from animal origin-free supernatant
UniProt	P05106
Localization	Cell surface, cytoplasmic
Applications	Immunohistochemistry (FFPE) : 1:250-1:500 Western Blot : 1:5000-1:25000
Limitations	This recombinant CD61 antibody is available for research use only.



Western blot testing of mouse spleen tissue lysate with recombinant CD61 antibody at 1:5000 dilution. Expected molecular weight: 87-110 kDa depending on glycosylation level.



IHC staining of FFPE human spleen tissue with recombinant CD61 antibody at 1:500.

Description

This antibody reacts to human Integrin beta 3A / ITGB3 / CD61.

Application Notes

The stated application concentrations are suggested starting points. Titration of the recombinant CD61 antibody may be required due to differences in protocols and secondary/substrate sensitivity.

Immunogen

A peptide corresponding to the internal region of human Integrin B3 was used as the immunogen for the recombinant CD61 antibody.

Storage

Store the recombinant CD61 antibody at -20oC.