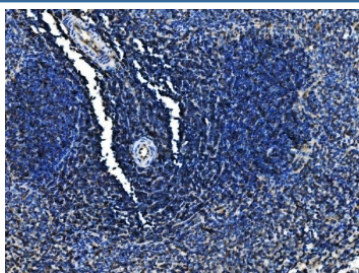


Cd6 Antibody (RQ6961)

Catalog No.	Formulation	Size
RQ6961	0.5mg/ml if reconstituted with 0.2ml sterile DI water	100 ug

Bulk quote request

Availability	1-3 business days
Species Reactivity	Rat
Format	Antigen affinity purified
Clonality	Polyclonal (rabbit origin)
Isotype	Rabbit IgG
Purity	Antigen affinity purified
Buffer	Lyophilized from 1X PBS with 2% Trehalose
UniProt	Q812A4
Applications	Immunohistochemistry (FFPE) : 2-5ug/ml Direct ELISA : 0.1-0.5ug/ml
Limitations	This Cd6 antibody is available for research use only.



IHC staining of FFPE rat spleen tissue with Cd6 antibody. HIER: boil tissue sections in pH8 EDTA for 20 min and allow to cool before testing.

Description

CD6 (Cluster of Differentiation 6) is a human protein encoded by the CD6 gene. This gene encodes a protein found on the outer membrane of T-lymphocytes as well as some other immune cells. The encoded protein contains three scavenger receptor cysteine-rich (SRCR) domains and a binding site for an activated leukocyte cell adhesion molecule. The gene product is important for continuation of T cell activation. This gene may be associated with susceptibility to multiple sclerosis. Multiple transcript variants encoding different isoforms have been found for this gene.

Application Notes

Optimal dilution of the Cd6 antibody should be determined by the researcher.

Immunogen

Recombinant rat Cd6 protein (amino acids S52-Q395) was used as the immunogen for the Cd6 antibody.

Storage

After reconstitution, the Cd6 antibody can be stored for up to one month at 4oC. For long-term, aliquot and store at -20oC. Avoid repeated freezing and thawing.