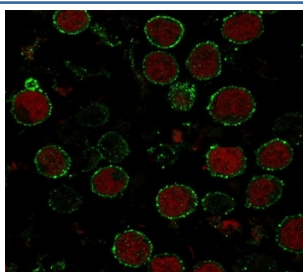


CD6 Antibody [clone CLDA6-1] (V7028)

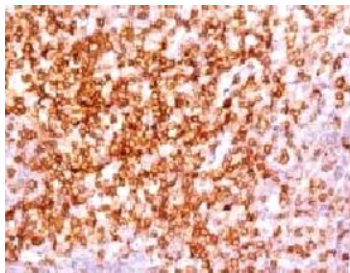
Catalog No.	Formulation	Size
V7028-100UG	0.2 mg/ml in 1X PBS with 0.1 mg/ml BSA (US sourced) and 0.05% sodium azide	100 ug
V7028-20UG	0.2 mg/ml in 1X PBS with 0.1 mg/ml BSA (US sourced) and 0.05% sodium azide	20 ug
V7028SAF-100UG	1 mg/ml in 1X PBS; BSA free, sodium azide free	100 ug
V7028IHC-7ML	Prediluted in 1X PBS with 0.1 mg/ml BSA (US sourced) and 0.05% sodium azide; *For IHC use only*	7 ml

[Bulk quote request](#)

Species Reactivity	Human
Format	Purified
Host	Mouse
Clonality	Monoclonal (mouse origin)
Isotype	Mouse IgG1, kappa
Clone Name	CLDA6-1
Purity	Protein G affinity chromatography
Buffer	1X PBS, pH 7.4
Gene ID	923
Localization	Cell surface and cytoplasmic
Applications	Immunofluorescence : 1-2ug/ml Immunohistochemistry (FFPE) : 1-2ug/ml for 30 min at RT Prediluted IHC Only Format : incubate for 30 min at RT (1)
Limitations	This CD6 antibody is available for research use only.



Immunofluorescent staining of human MOLT4 cells with CD6 antibody (green, clone CLDA6-1) and Reddot nuclear stain (red).



IHC analysis of human tonsil and CD6 antibody (clone CLDA6-1). Staining of formalin-fixed tissues requires boiling tissue sections in pH 9 10mM Tris with 1mM EDTA for 10-20 min followed by cooling at RT for 20 min.

Description

CD6 is a type I transmembrane glycoprotein that contains a 24-amino acid signal sequence, three extracellular 'scavenger receptor cysteine-rich' (SRCR) domains, a membrane-spanning domain and a 44-amino acid cytoplasmic domain. The CD6 glycoprotein is tyrosine phosphorylated during TCR-mediated T cell activation. CD6 shows significant homology to CD5. CD6 is present on mature thymocytes, peripheral T cells and a subset of B cells. antibody to CD6 can be used to deplete T cells from bone marrow transplants to prevent graft versus host disease.

Application Notes

The concentration stated for each application is a general starting point. Variations in protocols, secondaries and substrates may require the CD6 antibody to be titrated up or down for optimal performance.

1. The prediluted format is supplied in a dropper bottle and is optimized for use in IHC. After epitope retrieval step (if required), drip mAb solution onto the tissue section and incubate at RT for 30 min.

Immunogen

Human recombinant protein was used as the immunogen for this CD6 antibody.

Storage

Store the CD6 antibody at 2-8°C (with azide) or aliquot and store at -20°C or colder (without azide).

References (1)