

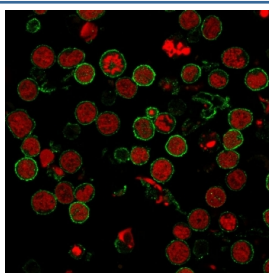
CD6 Antibody [clone 3F7B5] (V2039)

Catalog No.	Formulation	Size
V2039-100UG	0.2 mg/ml in 1X PBS with 0.1 mg/ml BSA (US sourced) and 0.05% sodium azide	100 ug
V2039-20UG	0.2 mg/ml in 1X PBS with 0.1 mg/ml BSA (US sourced) and 0.05% sodium azide	20 ug
V2039SAF-100UG	1 mg/ml in 1X PBS; BSA free, sodium azide free	100 ug
V2039IHC-7ML	Prediluted in 1X PBS with 0.1 mg/ml BSA (US sourced) and 0.05% sodium azide; *For IHC use only*	7 ml

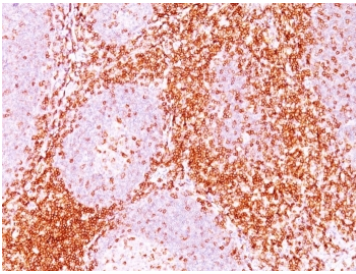
 Citations (2)

[Bulk quote request](#)

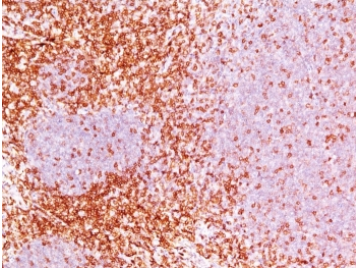
Species Reactivity	Human
Format	Purified
Host	Mouse
Clonality	Monoclonal (mouse origin)
Isotype	Mouse IgG1, kappa
Clone Name	3F7B5
Purity	Protein G affinity chromatography
Gene ID	923
Localization	Cell surface and cytoplasmic
Applications	Flow Cytometry : 1-2ug/million cells Immunofluorescence : 1-3ug/ml Immunohistochemistry (FFPE) : 1-2ug/ml for 30 min at RT
Limitations	This CD6 antibody is available for research use only.



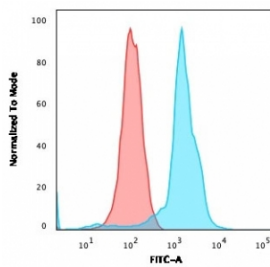
Immunofluorescent staining of human MOLT-4 cells with CD6 antibody (clone 3F7B5, green) and Reddot nuclear stain (red).



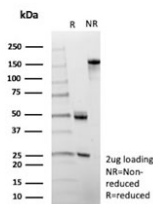
IHC staining of FFPE human tonsil tissue with CD6 antibody (clone 3F7B5). HIER: boil tissue sections in pH 9 10mM Tris with 1mM EDTA for 20 min and allow to cool before testing.



IHC staining of FFPE human tonsil tissue with CD6 antibody (clone 3F7B5). HIER: boil tissue sections in pH 9 10mM Tris with 1mM EDTA for 20 min and allow to cool before testing.



Flow cytometry staining of human MOLT-4 cells with CD6 antibody; Red=isotype control, Blue= CD6 antibody.



SDS-PAGE analysis of purified, BSA-free CD6 antibody (clone 3F7B5) as confirmation of integrity and purity.

Description

CD6 is a type I transmembrane glycoprotein that contains a 24-amino acid signal sequence, three extracellular scavenger receptor cysteine-rich (SRCR) domains, a membrane-spanning domain and a 44-amino acid cytoplasmic domain. The glycoprotein is tyrosine phosphorylated during TCR-mediated T cell activation. It shows significant homology to CD5. CD6 is present on mature thymocytes, peripheral T cells and a subset of B cells. CD6 antibody can be used to deplete T cells from bone marrow transplants to prevent graft versus host disease.

Application Notes

The concentration stated for each application is a general starting point. Variations in protocols, secondaries and substrates may require the antibody to be titrated up or down for optimal performance.

1. The prediluted format is supplied in a dropper bottle and is optimized for use in IHC. After epitope retrieval step (if required), drip mAb solution onto the tissue section and incubate at RT for 30 min.

Immunogen

The human rheumatoid synovial T cell line ST-1 was used as the immunogen for this CD6 antibody.

Storage

Store the CD6 antibody at 2-8oC (with azide) or aliquot and store at -20oC or colder (without azide).

References (1)