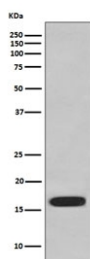


## CD59 Antibody [clone AABE-3] (RQ5418)

Catalog No.	Formulation	Size
RQ5418	Antibody in PBS with 0.02% sodium azide, 50% glycerol and 0.4-0.5mg/ml BSA	100 ul

[Bulk quote request](#)

Availability	1-2 weeks
Species Reactivity	Human
Format	Purified
Clonality	Rabbit Monoclonal
Isotype	Rabbit IgG
Clone Name	AABE-3
Purity	Affinity purified
UniProt	P13987
Applications	Western Blot : 1:1000-1:5000
Limitations	This CD59 antibody is available for research use only.



Western blot testing of HUVEC cell lysate with CD59 antibody. Expected molecular weight: 14-20 kDa depending on level of glycosylation.

## Description

This gene encodes a cell surface glycoprotein that regulates complement-mediated cell lysis, and it is involved in lymphocyte signal transduction. This protein is a potent inhibitor of the complement membrane attack complex, whereby it binds complement C8 and/or C9 during the assembly of this complex, thereby inhibiting the incorporation of multiple copies of C9 into the complex, which is necessary for osmolytic pore formation. This protein also plays a role in signal transduction pathways in the activation of T cells. Mutations in this gene cause CD59 deficiency, a disease resulting in hemolytic anemia and thrombosis, and which causes cerebral infarction. Multiple alternatively spliced transcript variants, which encode the same protein, have been identified for this gene. [RefSeq]

## **Application Notes**

Optimal dilution of the CD59 antibody should be determined by the researcher.

## **Immunogen**

A synthetic peptide specific to human CD59 was used as the immunogen for the CD59 antibody.

## **Storage**

Store the CD59 antibody at -20oC.