

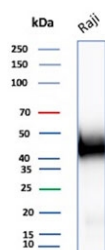
CD48 Antibody [clone rCD48/8834] (V4743)

Catalog No.	Formulation	Size
V4743-100UG	0.2 mg/ml in 1X PBS with 0.1 mg/ml BSA (US sourced), 0.05% sodium azide	100 ug
V4743-20UG	0.2 mg/ml in 1X PBS with 0.1 mg/ml BSA (US sourced), 0.05% sodium azide	20 ug
V4743SAF-100UG	1 mg/ml in 1X PBS; BSA free, sodium azide free	100 ug

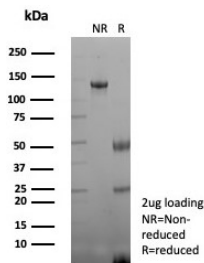
Recombinant **MOUSE MONOCLONAL**

[Bulk quote request](#)

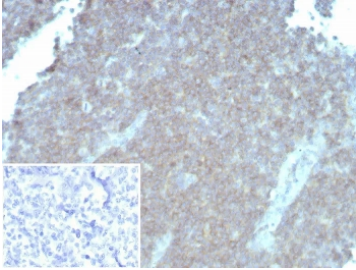
Availability	1-3 business days
Species Reactivity	Human
Format	Purified
Clonality	Recombinant Mouse Monoclonal
Isotype	Mouse IgG1, kappa
Clone Name	rCD48/8834
Purity	Protein A/G affinity
UniProt	P09326
Localization	Cell surface
Applications	Immunohistochemistry (FFPE) : 1-2ug/ml for 30 min at RT Western Blot : 2-4ug/ml
Limitations	This CD48 antibody is available for research use only.



Western blot testing of human Raji cell lysate with CD48 antibody. Expected molecular weight: 28-50 kDa depending on glycosylation level.



SDS-PAGE analysis of purified, BSA-free CD48 antibody (clone rCD48/8834) as confirmation of integrity and purity.



IHC staining of FFPE human tonsil tissue with CD48 antibody (clone rCD48/8834). Inset: PBS used in place of primary Ab (secondary Ab negative control). HIER: boil tissue sections in pH 9 10mM Tris with 1mM EDTA for 20 min and allow to cool before testing.

Description

CD48 is strongly expressed on lymphocytes and monocytes and weakly on granulocytes but is absent on platelets, fibroblasts, epithelium and endothelium.

Application Notes

Optimal dilution of the CD48 antibody should be determined by the researcher.

Immunogen

A recombinant partial protein sequence (within amino acids 1-200) from the human protein was used as the immunogen for the CD48 antibody.

Storage

Aliquot the CD48 antibody and store frozen at -20°C or colder. Avoid repeated freeze-thaw cycles.