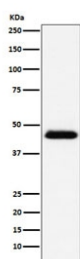


CD48 Antibody [clone AFOD-3] (RQ5270)

Catalog No.	Formulation	Size
RQ5270	Antibody in PBS with 0.02% sodium azide, 50% glycerol and 0.4-0.5mg/ml BSA	100 ul

[Bulk quote request](#)

Availability	1-2 weeks
Species Reactivity	Human
Format	Purified
Host	Rabbit
Clonality	Rabbit Monoclonal
Isotype	Rabbit IgG
Clone Name	AFOD-3
Purity	Affinity purified
UniProt	P09326
Applications	Western Blot : 1:500-1:2000
Limitations	This CD48 antibody is available for research use only.



Western blot testing of human Raji cell lysate with CD48 antibody. Predicted molecular weight: 28-50 kDa depending on glycosylation level.

Description

The CD48 gene encodes a member of the CD2 subfamily of immunoglobulin-like receptors which includes SLAM (signaling lymphocyte activation molecules) proteins. The encoded protein is found on the surface of lymphocytes and other immune cells, dendritic cells and endothelial cells, and participates in activation and differentiation pathways in these cells. The encoded protein does not have a transmembrane domain, however, but is held at the cell surface by a GPI anchor via a C-terminal domain which maybe cleaved to yield a soluble form of the receptor. [RefSeq]

Application Notes

Optimal dilution of the CD48 antibody should be determined by the researcher.

Immunogen

A synthetic peptide specific to human CD48 was used as the immunogen for the CD48 antibody.

Storage

Store the CD48 antibody at -20oC.