

CD48 Antibody [clone 5-4.8] (V3017)

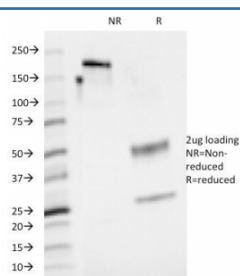
Catalog No.	Formulation	Size
V3017-100UG	0.2 mg/ml in 1X PBS with 0.1 mg/ml BSA (US sourced) and 0.05% sodium azide	100 ug
V3017-20UG	0.2 mg/ml in 1X PBS with 0.1 mg/ml BSA (US sourced) and 0.05% sodium azide	20 ug
V3017SAF-100UG	1 mg/ml in 1X PBS; BSA free, sodium azide free	100 ug



Citations (3)

[Bulk quote request](#)

Availability	1-3 business days
Species Reactivity	Human
Format	Purified
Host	Mouse
Clonality	Monoclonal (mouse origin)
Isotype	Mouse IgG2a, kappa
Clone Name	5-4.8
Purity	Protein G affinity chromatography
UniProt	P09326
Localization	Cell surface
Applications	Flow Cytometry : 0.5-1ug/10 ⁶ cells Immunofluorescence : 0.5-1ug/ml
Limitations	This CD48 antibody is available for research use only.



SDS-PAGE Analysis of Purified, BSA-Free CD48 Antibody (clone 5-4.8). Confirmation of Integrity and Purity of the Antibody.

Description

Reacts with human CD48, a 45kDa glycosyl phosphatidyl-inositol (GPI)-anchored cell surface protein. CD48 is strongly expressed on lymphocytes and monocytes and weakly on granulocytes but is absent on platelets, fibroblasts, epithelium and endothelium. CD48 is one of the markers for detecting the defects of GPI anchoring structure on the patients with paroxysmal nocturnal hemoglobinuria (PNH) and serves as a low affinity ligand for CD2.

Application Notes

Optimal dilution of the CD48 antibody should be determined by the researcher.

Immunogen

Human peripheral blood lymphocytes were used as the immunogen for the CD48 antibody.

Storage

Store the CD48 antibody at 2-8°C (with azide) or aliquot and store at -20°C or colder (without azide).