

CD48 Antibody [clone 156-4H9] (V3016)

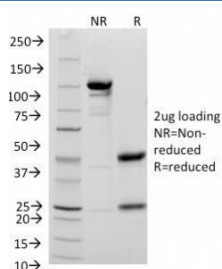
Catalog No.	Formulation	Size
V3016-100UG	0.2 mg/ml in 1X PBS with 0.1 mg/ml BSA (US sourced) and 0.05% sodium azide	100 ug
V3016-20UG	0.2 mg/ml in 1X PBS with 0.1 mg/ml BSA (US sourced) and 0.05% sodium azide	20 ug
V3016SAF-100UG	1 mg/ml in 1X PBS; BSA free, sodium azide free	100 ug



Citations (2)

[Bulk quote request](#)

Availability	1-3 business days
Species Reactivity	Human
Format	Purified
Host	Mouse
Clonality	Monoclonal (mouse origin)
Isotype	Mouse IgG2a, kappa
Clone Name	156-4H9
Purity	Protein G affinity chromatography
UniProt	P09326
Localization	Cell surface
Applications	Functional Studies (order BSA/sodium Azide-free Format) : Flow Cytometry : 1-2ug/10 ⁶ cells Immunofluorescence : 1-2ug/ml
Limitations	This CD48 antibody is available for research use only.



SDS-PAGE Analysis of Purified, BSA-Free CD48 Antibody (clone 156-4H9).
Confirmation of Integrity and Purity of the Antibody.

Description

Reacts with human CD48, a 45kDa glycosyl phosphatidyl-inositol (GPI)-anchored cell surface protein. CD48 is strongly expressed on lymphocytes and monocytes and weakly on granulocytes but is absent on platelets, fibroblasts, epithelium and endothelium. CD48 is one of marker for detecting the defects of GPI anchoring structure on the patients with paroxysmal nocturnal hemoglobinuria (PNH) and serves as a low affinity ligand for CD2.

Application Notes

Optimal dilution of the CD48 antibody should be determined by the researcher.

Immunogen

Human CD48 protein was used as the immunogen for the CD48 antibody.

Storage

Store the CD48 antibody at 2-8oC (with azide) or aliquot and store at -20oC or colder (without azide).