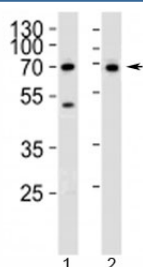


## CD46 Antibody (F48870)

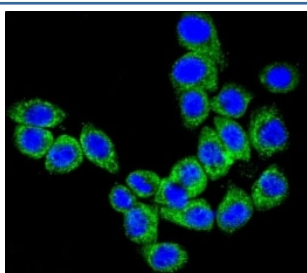
Catalog No.	Formulation	Size
F48870-0.4ML	In 1X PBS, pH 7.4, with 0.09% sodium azide	0.4 ml
F48870-0.08ML	In 1X PBS, pH 7.4, with 0.09% sodium azide	0.08 ml

[Bulk quote request](#)

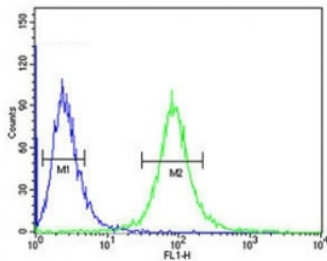
<b>Availability</b>	1-3 business days
<b>Species Reactivity</b>	Human
<b>Format</b>	Antigen affinity purified
<b>Clonality</b>	Polyclonal (rabbit origin)
<b>Isotype</b>	Rabbit Ig
<b>Purity</b>	Antigen affinity
<b>UniProt</b>	P15529
<b>Applications</b>	Western Blot : 1:1000 IHC (Paraffin) : 1:50-1:100 Flow Cytometry : 1:10-1:50 Immunofluorescence : 1:10-1:50
<b>Limitations</b>	This CD46 antibody is available for research use only.



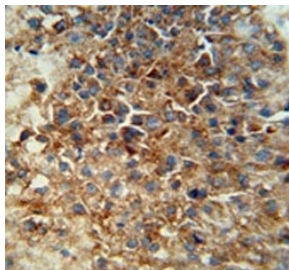
Western blot analysis of lysate from 1) Jurkat and 2) SK-BR-3 cell line using CD46 antibody at 1:1000. Observed molecular weight: 41~70 kDa depending on glycosylation level.



Confocal immunofluorescent analysis of CD46 antibody with HeLa cells followed by Alexa Fluor 488-conjugated goat anti-rabbit IgG (green). DAPI was used as a nuclear counterstain (blue).



CD46 antibody flow cytometric analysis of CEM cells (green) compared to a [negative control](#) (blue). FITC-conjugated goat-anti-rabbit secondary Ab was used for the analysis.



CD46 antibody immunohistochemistry analysis in formalin fixed and paraffin embedded human hepatocarcinoma. HIER: steam section in pH6 citrate buffer for 20 min and allow to cool prior to staining.

## Description

CD46 is a type I membrane protein and is a regulatory part of the complement system. The encoded protein has cofactor activity for inactivation of complement components C3b and C4b by serum factor I, which protects the host cell from damage by complement. In addition, the encoded protein can act as a receptor for the Edmonston strain of measles virus, human herpesvirus-6, and type IV pili of pathogenic *Neisseria*. Finally, the protein encoded by this gene may be involved in the fusion of the spermatozoa with the oocyte during fertilization. This gene is found in a cluster on chromosome 1q32 with other genes encoding structural components of the complement system.

## Application Notes

Titration of the CD46 antibody may be required due to differences in protocols and secondary/substrate sensitivity.

## Immunogen

A portion of amino acids 317-343 from the human protein was used as the immunogen for this CD46 antibody.

## Storage

Aliquot the CD46 antibody and store frozen at -20°C or colder. Avoid repeated freeze-thaw cycles.