

CD46 Antibody [clone 169-1-E4.3] (V2700)

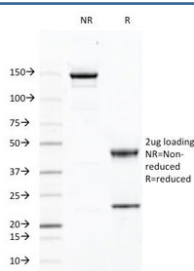
Catalog No.	Formulation	Size
V2700-100UG	0.2 mg/ml in 1X PBS with 0.1 mg/ml BSA (US sourced) and 0.05% sodium azide	100 ug
V2700-20UG	0.2 mg/ml in 1X PBS with 0.1 mg/ml BSA (US sourced) and 0.05% sodium azide	20 ug
V2700SAF-100UG	1 mg/ml in 1X PBS; BSA free, sodium azide free	100 ug



Citations (9)

[Bulk quote request](#)

Availability	1-3 business days
Species Reactivity	Human
Format	Purified
Host	Mouse
Clonality	Monoclonal (mouse origin)
Isotype	Mouse IgG2a, kappa
Clone Name	169-1-E4.3
Purity	Protein G affinity chromatography
UniProt	P15529
Localization	Cell surface
Applications	Flow Cytometry : 1-2ug/10 ⁶ cells Immunofluorescence : 1-2ug/ml
Limitations	This CD46 antibody is available for research use only.



SDS-PAGE Analysis of Purified, BSA-Free CD46 Antibody (clone 169-1-E4.3).
Confirmation of Integrity and Purity of the Antibody.

Description

Recognizes a protein of 52 kDa-58 kDa, identified as CD46 (also known as membrane cofactor protein, MCP). Its epitope is located on the four immunogenic short consensus repeat (SCR) domains at N-terminus of the protein. CD46 exists as many isoforms in a variety of tissues. It is strongly expressed on salivary gland ducts and kidney ducts, moderately on lymphocytes and endothelium, and weakly on interstitial tissues and muscle cells, but not on erythrocytes. CD46 functions as a C3b/C4b-binding glycoprotein that inhibits complement activation on host cells. It also serves as a measles virus receptor, an adherence factor for group A *Streptococcus pyogenes*, and a cellular pilus receptor for pathogenic *Neisseria*.

Application Notes

Optimal dilution of the CD46 antibody should be determined by the researcher.

Immunogen

Stimulated human leukocytes were used as the immunogen for the CD46 antibody.

Storage

Store the CD46 antibody at 2-8°C (with azide) or aliquot and store at -20°C or colder (without azide).